



**FLEX CORDLESS
VIBRATION MASSAGER
INSTRUCTIONS**

FLEX CORDLESS MASSAGER

Please read all instructions carefully to familiarise yourself with your new massager before using.

Save these instructions for further reference.

For any further assistance or information call Customer Services on

T: 01227 740066

or visit

W: www.wahl.co.uk

E: customer.services@wahl.co.uk

CONTENTS

| | |
|---------------------------------|---------|
| GENERAL USER INFORMATION | Page 3 |
| IMPORTANT SAFEGUARDS | Page 4 |
| DESCRIPTION OF PARTS | Page 8 |
| OPERATING INSTRUCTIONS | Page 10 |
| CHANGING ATTACHMENTS | Page 10 |
| CLEANING/STORAGE | Page 10 |
| MESSAGE TECHNIQUES | Page 11 |
| DISPOSAL | Page 12 |
| GUARANTEE | Page 15 |

GENERAL USER INFORMATION

Information about using the operation manual

- ▶ Before using the appliance for the first time, you must read and understand the operation manual completely.
- ▶ Consider the operation manual as part of the product and store it in a safe and accessible place.
- ▶ Include this operation manual if passing the appliance on to a third party.
- ▶ In the case of conflicts with national safety specifications or instructions, the national requirements must be followed.

Explanation of symbols and notes



DANGER

Danger of electric shock which may result in serious physical injury or death.



DANGER

Danger of explosion which may result in serious physical injury or death.



WARNING

Warning of possible physical injury or a health risk.



CAUTION

Information about danger of material damage.



Note with useful information and tips.

- ▶ Action to be taken by owner.
1. Carry out these actions in the sequence described.
- List

FLEX CORDLESS MASSAGER

Please retain this leaflet for future reference.

READ ALL INSTRUCTIONS BEFORE USING.

IMPORTANT SAFEGUARDS

When using this electrical appliance, especially when children are present, basic safety precautions should always be observed including the following.

Requirements

- ▶ This appliance can be used by children from aged 8 years and above and persons with reduced physical, sensory or mental capabilities, or lack of experience and knowledge, if they have been given supervision or instruction concerning use of the appliance in a safe way and understand the hazards involved. Children shall not play with the appliance. Cleaning and user maintenance shall not be made by children without supervision.
- ▶ Use this appliance only for its intended purpose as described in this manual. Do not use attachments not recommended by the manufacturer.

Hazards



Danger! Electric shock due to damage to appliance

- ▶ Do not operate the appliance with a broken cord, plug or charger, or if the appliance malfunctions, or is dropped or damaged in any way.
- ▶ Any servicing or repair must be performed by Wahl (UK) Ltd or a suitably qualified professional.
- ▶ The use of attachments that are not supplied by the manufacturer may cause fire, electric shock or injury and damage to the appliance.



Danger! Electric shock due to penetration of liquid.

- ▶ To protect against risk of electrical shock, never immerse the unit or let it come into contact with water or any other liquids. Do not use the unit with wet hands. If the appliance should become wet, damp or fall in water, remove plug from mains socket immediately. Do not put your hands in the water. Do not take into bathroom.

FLEX CORDLESS MASSAGER



Danger of explosion

- ▶ Never use the appliance where aerosol (spray) products are being used or where oxygen is released.



Warning! Injuries due to incorrect handling

- ▶ Switch off the appliance and unplug from outlet when not in use, before putting on or taking off attachments and also before cleaning the appliance.
- ▶ Never use your appliance without paying attention! Except when charging always unplug this appliance from the electricity outlet immediately after using
- ▶ In case of pregnancy, diabetes or illness, consult your physician before using this massager.
- ▶ Do not use the massager on:
 - a. Sensitive skin, swollen or inflamed areas, in the presence of poor circulation, where skin eruptions are present, or in the presence of unexplained calf or abdominal pain.
 - b. Varicose veins.
 - c. The front of the neck.
 - d. Genital areas.
 - e. Sleeping or unconscious persons.

- ▶ When using a massage attachment be sure to seat the attachment fully onto the stem and keep it on while massaging.
- ▶ Do not use the massager for more than 20 minutes at one time.
- ▶ Do not use the massager in close proximity to loose clothing or jewellery.
- ▶ Keep long hair away from massager while in use.
- ▶ This massager contains an electro-magnetic motor. To avoid risk of injury, it must not be used within 15cm of an implantable cardiac device.
- ▶ Do not use the massager without attachments.
- ▶ Do not operate this appliance under a blanket or pillow. Excessive heating can occur and cause fire, electric shock or injury.

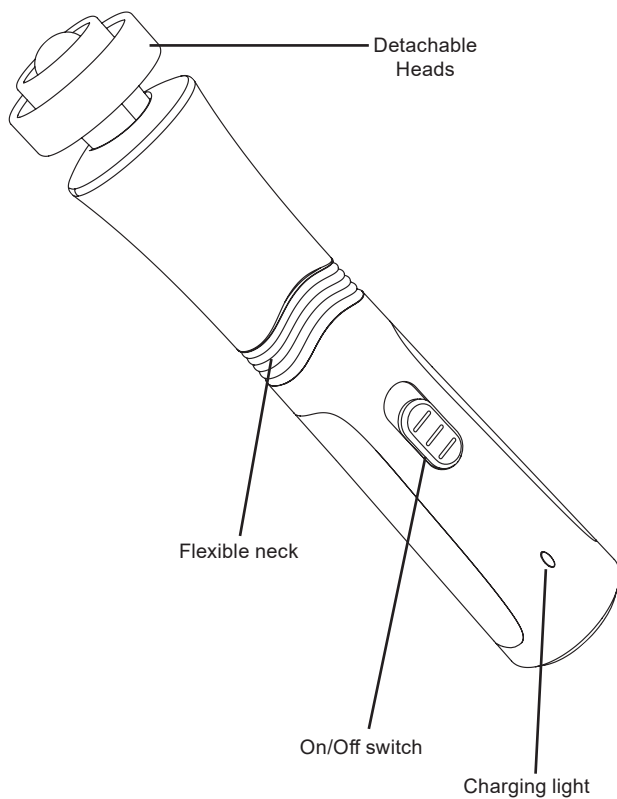


Caution! Danger of product damage

- ▶ Do not wrap the cord around the appliance.
- ▶ Do not use outdoors or in damp areas.
- ▶ Never carry the unit by its power cord.
- ▶ Do not drop or insert any object into any opening.
- ▶ Use this appliance only for its intended purpose.
- ▶ Keep the massager away from heated surfaces.

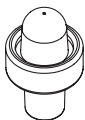
FLEX CORDLESS MASSAGER

DESCRIPTION OF PARTS



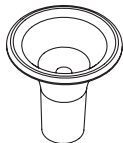
FLEX CORDLESS MASSAGER

DETACHABLE HEADS



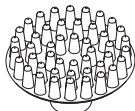
SPOT APPLICATOR

Lets you apply deep, pinpoint massage action to the exact body area needing relief.



GENERAL BODY ATTACHMENT

For general, all-body massage.



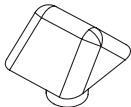
SCALP STIMULATOR

Delivers effective scalp massage and is soothing and relaxing.



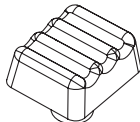
DEEP MUSCLE STIMULATOR

Reaches deep to relieve tired, aching muscles.



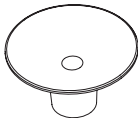
KNUCKLE JOINT ATTACHMENT

For concentrated action between the fingers or toes. Great for knee and elbow joints, too.



MUSCLE KNEADING ATTACHMENT

Delivers ripple-effect action for large muscle areas.



FACIAL VITALIZER

Provides beneficial, revitalizing facial massage. (Apply cold cream or lotion to face prior to use. Keep massager away from eyes.)

FLEX CORDLESS MASSAGER

BEFORE USE

Remove all packaging and familiarise yourself with your massager and attachments as listed in description of parts on pages 8 and 9.

Charge your massager before use, see below.

RECHARGING

1. This massager is designed for household use. It should be allowed to charge for 19 hours before first use.
2. Connect the transformer to the massager. **BE SURE MASSAGER IS IN THE "OFF - 0" POSITION WHEN CHARGING.**
3. Plug the recharging transformer into any convenient electrical outlet at the correct voltage.
4. Ni-MH battery life may be extended with the following procedure: Once every month, let the massager run until the motor stops. Move the switch to the "OFF - 0" position and recharge for 19 hours.
5. The massager will run for approximately 120 minutes on a single charge.

OPERATING INSTRUCTIONS

1. After allowing to fully charge, place the desired massage attachment on the stem of the massager. The attachments easily press on and pull off.
2. Slide the switch to the "ON - I" position.
3. Apply the massager to the targeted area, using continual movement. A circular motion is often most effective. (See MESSAGE TECHNIQUES.)

i **MESSAGE TECHNIQUES**

SHOULDERS AND NECK —

Massage each shoulder toward back of neck to point just behind and below ear. Then back to shoulder. Repeat several times.

ARMS —

Start with a gentle massage of the palms and fingers. Next, using a circular motion, move upward to forearms. Then up to biceps and shoulders.

LEGS —

If desired, massage bottoms of feet. Then, using a circular motion, massage each leg from calf on up and over thigh.

CHEST —

Massage from centre of chest outward, and up toward each shoulder.

BACK —

Massage from top of spine to bottom, and from centre outward.

ABDOMEN —

Relax abdominal muscles by massaging from centre outward, using a gentle, circular motion.

JOINTS —

Relieve tired, aching knees and elbows with smooth, circular strokes.

FACE —

Gently massage from the nose outward, taking care to avoid contact with the eye.

FLEX CORDLESS MASSAGER

SCALP —

Start at the back of the neck and massage up to the top of the head.

Using this up and down motion, massage across the scalp.

i CLEANING/STORAGE

Always unplug massager before cleaning.

To clean, simply wipe unit with a dry, soft cloth. Do not immerse in water or use any harsh cleaners or solvents. When storing unit, make sure cord is not twisted or kinked.

TROUBLESHOOTING

If your massager does not seem to take a charge, check the following before returning it for repair:

1. Check outlet current by plugging in another appliance.
2. Make sure the outlet simply is not connected to a light switch which turns the power at the outlet off when lights are turned off.
3. Be sure the massager is properly connected to the recharging transformer, all connections are secure and the switch on the trimmer is turned "OFF - 0."
4. If your electricity is connected to a master power switch, we suggest the massager be disconnected from the charger anytime the master switch is off. Leaving the unit plugged into a dead outlet or an unplugged charger will drain the battery.

WIRING



WARNING: If the transformer is damaged it must be replaced in order to avoid a hazard. This product must only be used with the transformer supplied. Should a replacement be required contact Wahl customer service.

BATTERY REPLACEMENT, REMOVAL AND DISPOSAL

Battery Replacement

For battery replacement the entire, Massager should be sent to: Wahl (UK) Ltd Customer Services (the address can be found on the reverse of this booklet) or taken to a suitably qualified professional. The battery should only be replaced by the original manufacturers spare.

Battery Removal and Disposal

At the end of its life, when it will no longer take a full charge, the battery in your Massager must be removed and recycled/disposed of correctly. Batteries should be disposed of at an official collection point separately from the Massager. If you are having trouble removing the battery you can also return the product to Wahl (UK) Ltd Customer Services who will dispose of it in an environmentally safe way.

To remove the battery follow these steps:

1. Unplug the transformer from the outlet, disconnect from Massager and allow the batteries to completely run down before disassembly.
2. Remove the two side grey cover plates, by using a small flat bladed screwdriver to prise then off.
3. Use a Philips screwdriver to remove the 2 screws

FLEX CORDLESS MASSAGER

from the lower back of the housing.

4. Using a flat bladed screwdriver prise the housing apart.
5. Cut the two wires on the end of the battery and remove the battery
6. Apply tape to both terminals of the battery before recycling/disposing.



WARNING: NEVER THROW BATTERIES INTO A FIRE OR WHERE HEAT COULD CAUSE THEM TO RUPTURE OR EXPLODE.

WASTE ELECTRICAL & ELECTRONIC EQUIPMENT DIRECTIVE 2002/96/EC (WEEE)



At the end of this products life it should not be disposed of with general household waste. Care should be taken to dispose of in a suitable manner in accordance with your Local Authority regulation.

GUARANTEE

This product is guaranteed against defects in material and workmanship for a period of 2 years from the date of original purchase or receipt as a gift.

Should this product become defective during the guarantee period, return it to the store of purchase together with your proof of purchase for repair or replacement.

Alternatively within the guarantee period you can return the product to Wahl (UK) Ltd who will repair any such defect or elect to replace the product or any part of it, without charge, provided that there is proof of purchase. Should a replacement be offered this will not extend the original guarantee period.

The guarantee becomes invalid in the case of misuse, alteration or repair by unauthorised persons.

This product is designed for domestic use only and use within a professional environment will invalidate the guarantee.

This guarantee in no way affects your rights under statutory law in the United Kingdom.

WAHL (UK) LTD
STERLING HOUSE
CLIPPER CLOSE
RAMSGATE
KENT
CT12 5GG
CUSTOMER SERVICES T: 01227 740066
www.wahl.co.uk

Form No. 93342-5301 Rev.1 08-18