



**Chromium Multi Groomer
Instructions**

Chromium Multi Groomer

Please read all instructions carefully to familiarise yourself with your new Wahl Multi Groomer before using.

Save these instructions for further reference.

For any further assistance or information call Customer Services on

T: 01227 740066

or visit

W: www.wahl.co.uk

E: customer.services@wahl.co.uk

INDEX

| | |
|--|---------|
| GENERAL USER INFORMATION | Page 3 |
| IMPORTANT SAFEGUARDS | Page 4 |
| OPERATING INSTRUCTIONS | Page 7 |
| SPECIAL FEATURES | Page 8 |
| BATTERY REPLACEMENT, REMOVAL & DISPOSAL | Page 12 |
| BLADE CARE | Page 13 |
| WIRING | Page 14 |
| PRODUCT REGISTRATION | Page 15 |
| GUARANTEE | Page 15 |

GENERAL USER INFORMATION

Information about using the operation manual

- ▶ Before using the appliance for the first time, you must read and understand the operation manual completely.
- ▶ Consider the operation manual as part of the product and store it in a safe and accessible place.
- ▶ Include this operation manual if passing the appliance on to a third party.
- ▶ In the case of conflicts with national safety specifications or instructions, the national requirements must be followed.

Explanation of symbols and notes



DANGER

Danger of electric shock which may result in serious physical injury or death.



DANGER

Danger of explosion which may result in serious physical injury or death.



WARNING

Warning of possible physical injury or a health risk.



CAUTION

Information about danger of material damage.



Note with useful information and tips.

- ▶ Action to be taken by owner.
1. Carry out these actions in the sequence described.
 - List

Please retain this leaflet for future reference.

READ ALL INSTRUCTIONS BEFORE USING.

IMPORTANT SAFEGUARDS

When using this electrical appliance, especially when children are present, basic safety precautions should always be observed including the following.

Requirements

- ▶ This appliance can be used by children from aged 14 years and above and persons with reduced physical, sensory or mental capabilities, or lack of experience and knowledge, if they have been given supervision or instruction concerning use of the appliance in a safe way and understand the hazards involved. Children shall not play with the appliance. Cleaning and user maintenance shall not be made by children without supervision.
- ▶ Use this appliance only for its intended purpose.

Hazards



Danger: Electric shock due to damage to appliance

- ▶ Do not operate the appliance with a broken cord, plug or charger, or if the appliance malfunctions, or is dropped or damaged in anyway.
- ▶ Any servicing or repair must be performed by an authorized service representative.
- ▶ The use of attachments that are not supplied by the manufacturer may cause fire, electric shock or injury and damage to the appliance.



Danger: Electric shock due to penetration of liquid.

- ▶ To protect against risk of electrical shock, never immerse the unit or let it come into contact with water or any other liquids. Do not use the unit with wet hands. If the appliance should become wet, damp or fall in water, remove plug from mains socket immediately. Do not put your hands in the water. Do not take into bathroom.



Danger of explosion

- ▶ Never use the appliance where aerosol (spray) products are being used or where oxygen is released.

- ▶ Exhausted batteries/ rechargeable batteries should not be disposed of in the household waste. Dispose of them in a completely discharged state in accordance with local legal regulations. Do not throw into fire where heat could cause them to rupture.



Warning: Injuries due to incorrect handling

- ▶ Switch off the appliance and unplug from outlet when not in use, before putting on or taking off attachments and also before cleaning the appliance.
- ▶ Never use your appliance without paying attention! Except when charging always unplug this appliance from the electricity outlet immediately after using.



Caution: Danger of product damage

- ▶ Do not wrap the cord around the appliance / charger.
- ▶ Do not use outdoors or in damp areas.
- ▶ Never carry the unit by its power cord.
- ▶ Do not drop or insert any object into any opening.

OPERATING INSTRUCTIONS

Before this appliance is used for the first time, it should be charged for 16-18 hours.

IMPORTANT: Only use Transformer supplied

1. Remove the trimmer, transformer and accessories from packaged material.
2. Connect the transformer to the trimmer.
BE SURE THE TRIMMER IS IN THE OFF POSITION WHEN CHARGING.
3. Plug the recharging transformer into any convenient electrical outlet at the correct voltage.
4. When trimmer is low in power, it should be connected to the transformer and plugged into an outlet to assure maximum power is available when next used. This transformer is designed to continuously charge the battery without over charging.
5. NiMH battery life may be extended with the following procedure: Once every month, let the trimmer run until the motor stops. Move the switch to the OFF position and recharge fully overnight.

TROUBLE SHOOTING

If your trimmer does not seem to be charging, check the following before returning for repair.

1. Check outlet current by plugging in another appliance.
2. Be sure the trimmer is properly connected to the recharging transformer, all connections are secure and the switch on the trimmer is OFF.
3. If your electricity is connected to a master power switch, we suggest the trimmer be disconnected from the charger anytime the master switch is off. Leaving the unit unplugged into a dead outlet or an unplugged charger may drain the battery.

4. If the trimmer does not run and its completely charged, turn the unit ON and pinch or push the blades manually. (Oil may have dried out between the blades, so they may be temporarily stuck together).

SPECIAL FEATURES:

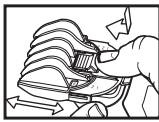
Your trimmer has been designed with several advanced features to help you get the perfect results every time you trim. Your trimmer may be used to neatly trim goatees, beards, moustaches, neckline, sideburns and around ears and eyebrows. It also makes a great all family trimmer for mini haircuts and touch ups between trips to the barber or to clean up the shape of the neck.

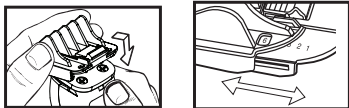
Soft touch grip allows you to hold the trimmer in a comfortable position for precision trimming.

A 6 position trimming guide makes achieving a consistent trim every time.

The guide can be removed (providing a seventh cutting position) and reattached without changing the preset cutting length, so once you have found the perfect length, there is no guesswork in achieving it every time. The trimming guide is a two piece assembly, consisting of a base and a comb. It should not be disassembled. To attach the guide, simply slide it on at a slight angle and press the release tab down to secure in position.

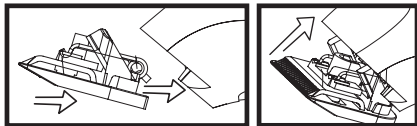
To remove the guide, gently push up on the release tab and slide the assembly away from the trimmer. Adjust the trimming length by pressing on the thumb lever and moving the comb forward or backward to the desired setting.





A detachable blade system enables you to quickly change from a standard width blade for full grooming to a narrow blade for detail trimming around a goatee, moustache or anywhere to define the hair line and clip any stray whiskers.

To remove the attachment, simply pull the edge of the blade away from the body of the unit. To attach, align back tab attachment head to cavity on the inner edge of the trimmer unit.



USING YOUR TRIMMER

TRIMMING AND EDGING YOUR BEARD

The following are suggested trimming steps and trimming positions. You may find different procedures work better for you.

1. Comb your beard in the direction that it grows to help reveal stray hairs that may be longer than others.
2. Attach the 6-Position guide to trim and taper your beard. Begin with the guide set at a long trimming length. Trim toward your chin in smooth, overlapping strokes, following the lay of your beard. If you trim against the way your beard naturally lays, the trimmer will cut the hair much shorter and the result may be patchy. Adjust the trimming guide to progressively shorter settings until you reach the desired length of beard. You may wish to set the trimming guide attachment to cut closer near the

ear and down under the chin, changing to a longer setting toward the front of the face and point your chin. When the trimming guide is removed, it will remain at its last length setting until you change it. Always be sure the trimming guide is locked solidly into the desired position before you start to trim.

3. To cut the outline of your beard, remove the trimming guide. Starting under your chin and working back toward your jawbone and ears, cut the outer perimeter of your beard underneath the jaw bone. Continue the line all the way up to the ears and hairline.
4. Accentuate your beard line by using the trimmer in a downward motion. Start at the line you've created and working from the chin back toward ears, trim the area right under your beard line.
5. Define the upper part of your beard using the same technique.
6. For a neater finished look, replace attachment blade with the detail blade. Use this blade for fine, detail trimming anywhere it is needed, such as the sideburns near the ears, goatees e.t.c

DETAILING NECKLINES, SIDEBURNS, and MOUSTACHES AND BEARDS using your trimmer head.

Slowly move trimmer downward on desired areas to neatly trim and shape.

TRIMMING ARM AND LEG HAIR using your trimmer head.

Simply guide the trimmer over your arm or leg until desired hair length is achieved.

TRIMMING CHEST AND STOMACH using your trimmer head.

Glide the trimmer over your torso region, in an upward motion until desired hair length is achieved. For tight, scratch free trimming, use the #1 guide comb.

TRIMMING PRIVATE AREAS with the trimmer and detailer head.

1. Volume reduction using trimming head. Attach guide comb and select a long trimming length. Begin trimming, starting at the top and working down. Use progressively closer settings to get the look and length you prefer.
2. For a hard to reach or tight areas, use the detailer head. Always pull skin taut. Then slowly move the detailer through the area to trim until desired look is accomplished.

TRIMMING NOSE HAIR using detailer head.

Make sure the nasal passages are clean. Slowly move the detailer in and out of each nostril, no more than a ¼ inch deep.

TRIMMING EAR HAIR using your detailer head or rotary head.

Make sure the outer areas of ears do not contain any wax. Hold the ear flat with one hand and carefully insert head no more than ¼ inch into the outer ear.



WARNING: DO NOT INSERT THE HEAD OR ANY FOREIGN OBJECT INTO THE INNER EAR. FOR HAIR GROWING ON THE OUTSIDE OF THE EAR, SIMPLY MOVE THE HEAD SLOWLY ALONG THE EDGES OF THE EAR.

TRIMMING EYEBROWS using your detailer or rotary head.

Slowly move head to neatly trim stray hairs. For precise even trimming, slowly move the head closer or farther away from eyebrows to achieve desired length. Do not press against a brow as it may remove too much hair.

TRIMMING WITH ATTACHMENT COMBS

Your trimmer includes three attachments, stubble, medium and

long. The stubble guide has 1 bar, the medium-cut has 2 bars and the long attachment has 3 bars. These attachments are ideal for blending, tapering and defining beards, as well as for achieving a close trim stubble look around the face.

BATTERY REPLACEMENT, REMOVAL AND DISPOSAL

Battery Replacement

For battery replacement the entire, intact trimmer should be sent to: Wahl (UK) Ltd Customer Services (the address can be found on the reverse of this booklet) or taken to a suitably qualified professional. The battery should only be replaced by the original manufacturers spare.

BATTERY REMOVAL AND DISPOSAL

At the end of its life, when it will no longer take a full charge, the battery in your trimmer must be removed and recycled/disposed of correctly. Batteries should be disposed of at an official collection point. If you are having trouble removing the battery you can also return the product to Wahl (UK) Ltd Customer Services who will dispose of it in an environmentally safe way.

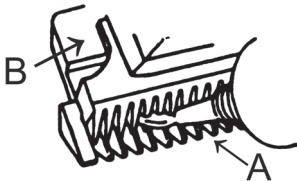
To remove the battery follow these steps:

1. Unplug the transformer from the outlet, disconnect from trimmer and allow the batteries to completely run down before disassembly.
2. Remove the blade by pushing on the teeth away from the trimmer head
3. In the head of the trimmer, now exposed by removal of the blade, prise away the black plastic lugs located on the left and right hand side of the head using a small flat blade screwdriver
4. The top and bottom of the housing join where the drive shaft from the motor protrudes, insert the flat bladed

- screwdriver into the gap and prize apart.
5. Cut or break the wire stamps on both ends of the battery and remove the battery
 6. Apply tape to both ends of the battery before recycling/ disposing.

OILING CLIPPER BLADES

The blades of your new clipper should be oiled after every haircut. Simply place a few drops of Wahl Clipper Oil on the blades at points A and B. Switch the clipper on briefly (approx 10 seconds) to ensure the oil film is evenly distributed. Use only the Wahl Clipper Oil included in the pack. Due to the high speed of your Wahl Clipper, the correct type of oil must be used. Do not use hair oil, grease or any oil mixed with kerosene or any solvent, as the solvent will evaporate and leave the thick oil, slowing down the blades. Wahl Clipper Oil is a very thin, natural oil which will not evaporate and will not slow down the blades.



! IMPORTANT: Do not over Oil.

BLADE CARE

Trimmer blades have precision-hardened, ground and lapped cutting teeth. Blades should be handled carefully and never bumped or used the cut dirty abrasive material. Should blades become dull or damaged, you may purchase a new blade assembly from Wahl. Be sure to ask for the Groomsman Blade Assembly.

WIRING



WARNING: If the transformer is damaged it must be replaced by the manufacturers service agent or a similarly qualified person in order to avoid a hazard. This product must only be used with the transformer supplied. Should a replacement be required contact Wahl customer services.

DISPOSAL



Handle with care. Environmental damage in the case of incorrect disposal.

Correct disposal will ensure environmental protection and prevent any potentially harmful impacts on people and the environment.

Adhere to the relevant legal requirements when disposing of the appliance.

Information on the disposal of electrical and electronic appliances in the European Community:



Within the European Community, national regulations are specified for the disposal of electrical appliances, based on EU Waste Electrical and Electronic Equipment Directive 2002/96/EC (WEEE). In accordance with this, the appliance can no longer be disposed of with the local or domestic waste.

The appliance will be accepted free of charge by local collection points or recycling centres.

PRODUCT REGISTRATION

Wahl are constantly developing and launching new products in the UK. We would like to understand your product needs and expectations and we value any comments you may have. As part of Wahl Customer Services, we are offering you the chance to be kept up to date with the latest product launches, innovations and special offers.

Please take a minute to register your product online at www.wahl.co.uk.

GUARANTEE

This product is guaranteed against defects in material and workmanship for a period of 3 years from the date of original purchase or receipt as a gift.

Should this product become defective during the guarantee period, return it to the store of purchase together with your proof of purchase for repair or replacement

Alternatively within the guarantee period you can return the product to Wahl (UK) Ltd who will repair any such defect or elect to replace the product or any part of it, without charge, provided that there is proof of purchase. Should a replacement be offered this will not extend the original guarantee period.

The guarantee becomes invalid in the case of misuse, alteration or repair by unauthorised persons.

This guarantee does not include blades, cables, shaver heads, foils and cutters etc, which are consumable parts.

This product is designed for domestic use only and use within a professional environment will invalidate the guarantee. This guarantee in no way affects your rights under statutory law in the United Kingdom.

WAHL (UK) LIMITED
HERNE BAY TRADE PARK
SEA STREET
HERNE BAY
KENT
CT6 8JZ.

CUSTOMER SERVICES **T:** 01227 740066
www.wahl.co.uk

Form No. 58934-002 Rev0 03-16