



WAHL®

james
MARTIN

Digital Scales
ZX774

Please read all instructions carefully to familiarize yourself with the Wahl James Martin Digital Scales before using.

THIS DIGITAL SCALES IS INTENDED FOR HOUSEHOLD USE ONLY.

Save these instructions for further reference.

For any further assistance or information call customer services on
T: 01227 740066 or visit
W: www.wahl.co.uk
E: customer.services@wahl.co.uk

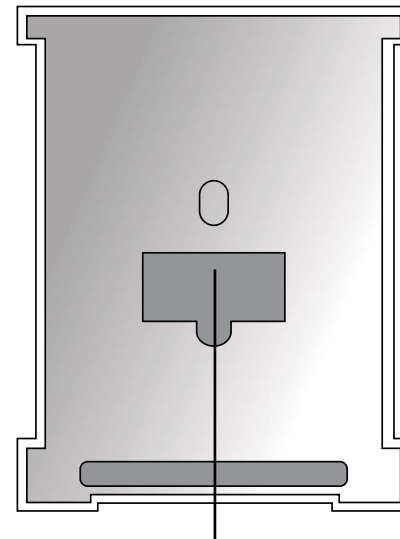
DESCRIPTION OF PARTS

- A:** Battery compartment
- B:** Unit button (kg/g/lb/oz)
- C:** Z/T button (zero/tare)
- D:** On/Off button
- E:** LCD display
- F:** Glass top weighing platform

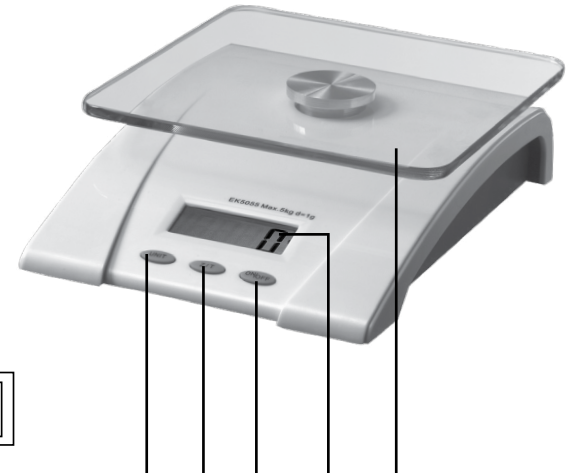
INDEX

- DESCRIPTION OF PARTS**
- FEATURES**
- OPERATION**
- CLEANING AND MAINTENANCE**
- BATTERY INFORMATION**
- GUARANTEE**

- Page 3
- Page 4
- Page 5
- Page 6
- Page 6
- Page 7



A.



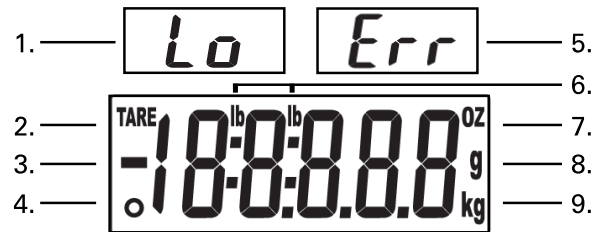
B. C. D. E. F.

**READ ALL INSTRUCTIONS BEFORE USE.
KEEP APPLIANCE AWAY FROM LIQUIDS.**

FEATURES

1. Max weight capacity: 5kg/11lb.
2. Graduations: 1 gram/0.05oz.
3. Gram/Ounce convertible.
4. Auto-Zero and Tare function.
5. Auto-Off.
6. Overload indication: 'Err'
7. Low battery indication: 'Lo'
8. Power: 2 x AAA alkaline batteries (included).

LCD DISPLAY



1. Low battery power icon.
2. Tare weight.
3. Negative value.
4. Zero weight.
5. Overload icon.
6. Weight displayed in lb icon.
7. Weight displayed in oz icon.
8. Weight displayed in gram icon.
9. Weight displayed in kg icon.

INITIAL PREPARATION

The batteries are already installed into the battery compartment (A) on the bottom of the unit. Open the battery compartment and remove the insulating strip, the scales are now ready for use.

Place the unit on a dry, flat, level surface and ensure the unit is stable.

OPERATION

1. Press On/Off button (D) to turn the unit on.
2. LCD will come on showing all segments lit up, then prompt to '0.000kg'.
3. Press unit button (B) for setting to kg, gram, lb or oz.
4. Ensure the unit is stable and showing zero weight before weighing, and that the glass platform is dry.
5. When using a weighing bowl position the bowl centrally on the glass before turning on.
6. Always try to place the ingredient you are weighing in the centre of the glass platform or bowl.
7. Wait until the LCD has stabilised, the LCD will then indicate the proper weight value of the ingredient you are weighing.

TARE FUNCTION

You can do consecutive weighing without removing the weighing mass already placed on the platform. Each time before adding an additional ingredient, simply press the Z/T button (C) once, it will then conduct a tare function and return the LCD to zero, then add a new ingredient and the LCD will weigh and indicate only the net weight of the added ingredient. While the tare function is activated the LCD will show an icon 'Tare' on the side. When you remove the ingredients the LCD will show a negative value of the ingredients removed.

Please note:

Allowance for Tare function = 0.8% of full capacity. When the total weight exceeds 0.8% of full capacity, the full capacity will be reduced by the corresponding weight being tared.

AUTO/OFF, on/off

When you have completed weighing, simply press the on/off button (D) to turn off the unit. Or if the unit is left to idle it will automatically shut down after 2 minutes.

CLEANING AND MAINTENANCE

1. The unit is a high precision device and is extremely sensitive. Avoid dropping the unit or dropping heavy objects on to the unit.
2. Use a slightly damp cloth to clean the appliance a mild detergent can be used if necessary, do not use strong chemicals, alcohol or benzene for cleaning.
3. Keep unit away from high temperatures.
4. Keep unit away from high electronic magnetic fields such as cordless phone, computer transformer etc, as this will interfere with the function and accuracy.
5. Always use the scale on a hard flat surface.
6. If the unit fails to work check the batteries are installed correctly and have sufficient power.

BATTERY INFORMATION

This product is powered by 2 x AAA Alkaline batteries (included).

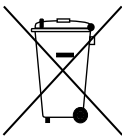
When the battery is spent replace with a like for like battery.

Do not attempt to recharge alkaline or regular batteries in battery charging devices.

Always dispose of old batteries in a suitable manner in accordance with your Local Authority regulations.

⚠ WARNING: NEVER THROW BATTERIES INTO A FIRE OR WHERE HEAT COULD CAUSE THEM TO RUPTURE OR EXPLODE.

WASTE ELECTRICAL & ELECTRONIC EQUIPMENT DIRECTIVE 2002/96/EC (WEEE)



At the end of this products life it should not be disposed of with general household waste.

Care should be taken to dispose of in a suitable manner in accordance with your Local Authority regulation.

GUARANTEE

This product is guaranteed against defects in material and workmanship for a period of 2 years from the date of original purchase or receipt as a gift.

Should this product become defective during the guarantee period, return it to the store of purchase together with your proof of purchase for repair or replacement

Alternatively within the guarantee period you can return the product to Wahl (UK) Ltd who will repair any such defect or elect to replace the product or any part of it, without charge, provided that there is proof of purchase. Should a replacement be offered this will not extend the original guarantee period.

The guarantee becomes invalid in the case of misuse, alteration or repair by unauthorised persons.

This product is designed for domestic use only and use within a professional environment will invalidate the guarantee.

This guarantee in no way affects your rights under statutory law in the United Kingdom.

PRODUCT REGISTRATION

Wahl are constantly developing and launching new products in the UK. We would like to understand your product needs and expectations and we value any comments you may have. As part of Wahl Customer Care, we are offering you the chance to be kept up to date with the latest product launches, innovations and special offers.

Please take a minute to register your product online at www.wahl.co.uk

Wahl (UK) Ltd
Herne Bay Trade Park
Herne Bay
Kent
CT6 8JZ
www.wahl.co.uk

Customer Service T: 01227 740066

Form No. ZA207
Rev4 04-13



james
MARTIN