



**HOT AIR
STYLER**

HOT AIR STYLER

Please read all instructions carefully to familiarise yourself with your new Wahl Styler before using.

Save these instructions for further reference.

For any further assistance or information call Customer Services on

T: 01227 740066

or visit

W: www.wahl.co.uk

E: customer.services@wahl.co.uk

CONTENTS

GENERAL USER INFORMATION	Page 3
IMPORTANT SAFEGUARDS	Page 4
OPERATING INSTRUCTIONS	Page 7
CARE AND CLEANING	Page 9
WIRING	Page 9
DISPOSAL	Page 10
PRODUCT REGISTRATION	Page 11
GUARANTEE	Page 11

GENERAL USER INFORMATION

Information about using the operation manual

- ▶ Before using the appliance for the first time, you must read and understand the operation manual completely.
- ▶ Consider the operation manual as part of the product and store it in a safe and accessible place.
- ▶ Include this operation manual if passing the appliance on to a third party.
- ▶ In the case of conflicts with national safety specifications or instructions, the national requirements must be followed.

Explanation of symbols and notes



DANGER

Danger of electric shock which may result in serious physical injury or death.



DANGER

Danger of explosion which may result in serious physical injury or death.



WARNING

Warning of possible physical injury or a health risk.



CAUTION

Information about danger of material damage.



Note with useful information and tips.

- ▶ Action to be taken by owner.
1. Carry out these actions in the sequence described.
- List

HOT AIR STYLER

Please retain this leaflet for future reference.

READ ALL INSTRUCTIONS BEFORE USING.

IMPORTANT SAFEGUARDS

When using this electrical appliance, especially when children are present, basic safety precautions should always be observed including the following.

Requirements

- ▶ This appliance can be used by children from aged 8 years and above and persons with reduced physical, sensory or mental capabilities, or lack of experience and knowledge, if they have been given supervision or instruction concerning use of the appliance in a safe way and understand the hazards involved. Children shall not play with the appliance. Cleaning and user maintenance shall not be made by children without supervision.
- ▶ Keep the appliance and its cord out of reach of children less than 8 years.
- ▶ Use this appliance only for its intended purpose.
- ▶ When the styler is used in the bathroom, unplug it after use since the proximity of water presents a hazard even when the styler is switched off.
- ▶ For additional protection, the installation of a residual current device (RCD) having a rated

residual operating current not exceeding 30 mA is advisable in the electrical circuit supplying the bathroom. Ask your installer for advice. (NOTE: Mains sockets might not be permitted in average sized bathrooms according to local wiring regulations.)

- ▶ Do not use with a voltage converter.

Hazards



Danger! Electric shock due to damage to appliance

- ▶ Do not operate the appliance with a broken cord or plug, or if the appliance malfunctions, or is dropped or damaged in any way.
- ▶ If the supply cord is damaged, it must be replaced by the manufacturer or its service agent or a similarly qualified person in order to avoid a hazard.
- ▶ Do not let the cord hang over the edge of the work surface or let it touch any hot surfaces.



WARNING: Do not use this appliance near bathtubs, showers, basins or other vessels containing water.



Danger! Electric shock due to penetration of liquid.

- ▶ To protect against risk of electrical shock, never immerse the unit or let it come into contact with water or any other liquids. Do not

HOT AIR STYLER

use the unit with wet hands. If the appliance should become wet, damp or fall in water, remove plug from mains socket immediately. Do not put your hands in the water. Do not take into bathroom.

- ▶ The use of attachments that are not supplied by the manufacturer may cause fire, electric shock or injury and damage to the appliance.



Warning! Injuries due to incorrect handling

- ▶ Switch off the appliance and unplug from outlet when not in use, before putting on or taking off attachments and also before cleaning the appliance.
- ▶ Care should be taken to avoid contact with the skin, the face and neck.



Caution! Danger of product damage

- ▶ Never use your appliance without paying attention!
- ▶ Always unplug the unit when not in use or left unattended.
- ▶ Do not wrap the cord around the appliance.
- ▶ Do not obstruct the inlet or outlet grills.
- ▶ If however, the airflow is inadvertently obstructed during use, the built in thermal safety device will automatically cut out the appliance. The styler will switch on again automatically after cooling down for a few minutes.

HOT AIR STYLER

- ▶ Do not use outdoors or in damp areas.
- ▶ Never carry the unit by its power cord.
- ▶ Do not drop or insert any object into any opening.
- ▶ Allow the appliance to cool before storing away.



NOTE: During the first few minutes of the initial use, you may notice smoke and a slight odour. This is normal and will quickly disappear.

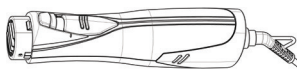
OPERATING INSTRUCTIONS

HEAT SETTINGS

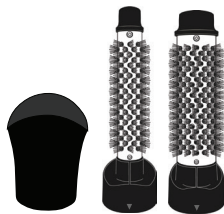
The Wahl Hot Air Styler has 3 settings: low, high and cool.

- 0 - Off
- C - Cool air
- 1 - Mild air flow
- 2 - Strong air flow

- 1 Hot air styler
- 2 Nozzle
- 3 21 mm bristle brush
- 4 32 mm bristle brush



1



2

3

4

ION TECHNOLOGY

Your Wahl Hot Air Styler has a continuous ionic feature. Ion technology makes hair shiny, smooth and more manageable. It works by releasing negative ions that neutralise a normally positive charge on frizzy, fly away hair and helps eliminate static electricity and air particles that may dull the hair.

HOW TO USE

Before plugging in check the voltage on the rating label corresponds to the local mains voltage.

HOT AIR STYLER

Wash and condition the hair, then gently towel dry hair to remove excess water.

As a general guide use the HIGH heat and speed setting for rough drying for thicker hair and the LOW setting for finer hair and more precise control when styling. The cool feature can be used at the end to set the style.



WARNING: Do not use the styler on hair that is dripping wet.

USING YOUR ATTACHMENTS



NOTE: Attachments included will vary depending on the specification of the kit.

To fit the attachments, simply align the marking on the attachment with the marking on the unit handle and gently push the attachment collar onto the handle until it snaps in place.

To release the attachments press the release button, (this is the button at the front of your styler above the light) and pull the attachments away from the handle, allow attachments to cool to ensure safe handling.

USING THE CONCENTRATOR NOZZLE

This is ideal for precise styling, the concentrator nozzle directs airflow at a small section of hair.

To build volume direct the airflow at the roots, against the natural growth pattern.

USING THE THERMAL BRISTLE BRUSHES

Create large, soft, long lasting curls and increases volume and body.

Place the brush under the hair close to the scalp. Then slowly run to hair ends. This will give your hair perfect shape, while the bristles and hot air create a wonderful shiny look.

When hair is almost dry, slowly run the thermal bristle brush attachment from the scalp and move towards the ends to create lift, volume and large soft curls.

HOT AIR STYLER

Always ensure the air inlets are free from fluff and dust etc. The inlet grill must be cleared of any build up of fluff or hair by using a small dry brush. Store the appliance away from dust or moisture.

Beginning at the crown area, take a small section of hair (about 2 inches) and place the brush near the root area. Slide the hot air styler towards the ends, then wind towards the root area.

Hold for 10-15 seconds for medium or thick hair and about 5-10 seconds for fine hair, gently unwind the hair without tension.

AFTER USING THE ATTACHMENTS.



IMPORTANT: The attachments may be hot immediately after use. Allow the attachments to cool before removal.

REPAIRS

Do not attempt to repair the appliance yourself. Repairs can only be made by qualified service personal with special tools. Repairs by unauthorised persons will invalidate the guarantee, and may result in accident or injury. If the styler fails to work properly when purchased return it to the retailer from which it was purchased.

CARE AND CLEANING

Always unplug your hot air styler and allow it to cool down before cleaning. Do not immerse in water or liquids. Use a slightly damp cloth to clean the unit handle of your hot air styler, and dry thoroughly with a clean soft cloth.

The attachments may be washed in warm water.



MAKE SURE THEY ARE COMPLETELY DRY BEFORE PUTTING BACK ON STYLER



IMPORTANT: Do not use harsh abrasive cleaners.

WIRING



WARNING: If the supply cord is damaged it must be replaced by the manufacturers service agent or a similarly qualified person in order to avoid a hazard.

HOT AIR STYLER

The wires in the mains lead of this hot air styler are coloured in accordance to the following code:

Blue Neutral (N) Brown Live (L)

This appliance is fitted with a 3 pin BS Approved BS1363/A plug which has a 13amp fuse fitted. If the plug supplied is not suitable for your socket or becomes damaged, it should be cut off and disposed of, and a suitable plug fitted as detailed below.

As the colours of the wires in the mains lead of this styler may not correspond with the colour markings identifying the terminals in your plug, proceed as follows

The wire which is coloured BLUE must be connected to the terminal in the plug which is marked with the letter 'N' or coloured BLACK or BLUE.

The wire which is coloured BROWN must be connected to the terminal in the plug which is marked with the letter 'L' or coloured RED or BROWN.

DO NOT connect either wire to the terminal in the plug which is marked with the letter E, has the Earth symbol, or coloured GREEN or GREEN AND YELLOW

DISPOSAL



Handle with care! Environmental damage in the case of incorrect disposal.

Correct disposal will ensure environmental protection and prevent any potentially harmful impacts on people and the environment.

Adhere to the relevant legal requirements when disposing of the appliance.

Information on the disposal of electrical and electronic appliances in the European Community:



Within the European Community, national regulations are specified for the disposal of electrical appliances, based on EU Waste Electrical and Electronic Equipment Directive 2002/96/EC (WEEE). In accordance with this, the appliance can no longer be disposed of with

the local or domestic waste.

The appliance will be accepted free of charge by local collection points or recycling centres.

PRODUCT REGISTRATION

Wahl are constantly developing and launching new products in the UK. We would like to understand your product needs and expectations and we value any comments you may have. As part of Wahl Customer services, we are offering you the chance to be kept up to date with the latest product launches, innovations and special offers.

Please take a minute to register your product online at www.wahl.co.uk.

GUARANTEE

This product is guaranteed against defects in material and workmanship for a period of 1 year from the date of original purchase or receipt as a gift.

Should this product become defective during the guarantee period, return it to the store of purchase together with your proof of purchase for repair or replacement

Alternatively within the guarantee period you can return the product to Wahl (UK) Ltd who will repair any such defect or elect to replace the product or any part of it, without charge, provided that there is proof of purchase. Should a replacement be offered this will not extend the original guarantee period.

The guarantee becomes invalid in the case of misuse, alteration or repair by unauthorised persons.

This product is designed for domestic use only and use within a professional environment will invalidate the guarantee.

This guarantee in no way affects your rights under statutory law in the United Kingdom.

WAHL (UK) LIMITED
HERNE BAY TRADE PARK
SEA STREET
HERNE BAY
KENT
CT6 8JZ.

CUSTOMER SERVICES T: 01227 740066
www.wahl.co.uk

Form No. ZB653 Rev0 10-16