



**PET NAIL
GRINDER**

PET NAIL GRINDER

Please read all instructions carefully to familiarise yourself with the Wahl Pet Nail Grinder before using.

Save these instructions for further reference.

For any further assistance or information visit

W: www.wahl.co.uk

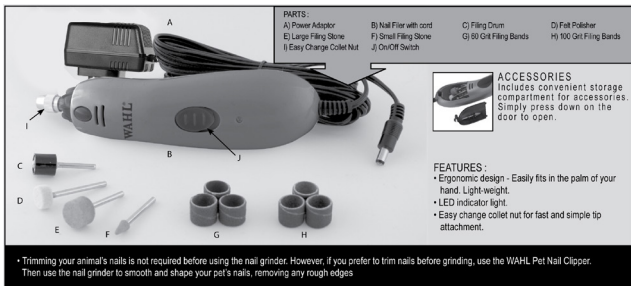
E: customer.services@wahl.co.uk

CONTENTS

DESCRIPTION OF PARTS	Page 3
TECHNICAL DATA	Page 4
GENERAL USER INFORMATION	Page 5
IMPORTANT SAFEGUARDS	Page 6
OPERATING INSTRUCTIONS	Page 10
CLEANING AND MAINTENANCE	Page 12
WIRING	Page 12
DISPOSAL	Page 13
GUARANTEE	Page 14

DESCRIPTION OF PARTS

- A: Power Adaptor
- B: Nail Filer with Cord
- C: Filing Drum
- D: Felt Polisher
- E: Large Grinding Stone
- F: Small Grinding Stone
- G: 60 Grit Filing Stones
- H: 100 Grit Filing Stones
- I: Easy Change Locking Nut
- J: On/Off Switch



ACCESSORIES

Includes convenient storage compartment for accessories. Simply press down on the door to open.

PET NAIL GRINDER

TECHNICAL DATA

TRANSFORMER

Nameplate output power (W):	7.2W
Root mean square (Rms) input voltage (V):	100-240V
Input AC frequency:	50/60Hz
Rms output voltage (V):	9V
Rms output current (mA):	800mA
Average active efficiency:	80.3%
Efficiency at low load (10%):	73.17%
No-load power consumption (W):	0.085W

GENERAL USER INFORMATION

Information about using the operation manual

- ▶ Please read this instruction manual carefully and familiarise yourself with your new Pet Nail Grinder before using for the first time. Please retain these instructions for future reference.
- ▶ Consider the operation manual as part of the product and store it in a safe and accessible place.
- ▶ Include this operation manual if passing the appliance on to a third party.
- ▶ In the case of conflicts with national safety specifications or instructions, the national requirements must be followed.

Explanation of symbols and notes

**DANGER**

Danger of electric shock which may result in serious physical injury or death.

**DANGER**

Danger of explosion which may result in serious physical injury or death.

**WARNING**

Warning of possible physical injury or a health risk.

**CAUTION**

Information about danger of material damage.



Note with useful information and tips.

- ▶ Action to be taken by owner.
1. Carry out these actions in the sequence described.

List

PET NAIL GRINDER

Please retain this leaflet for future reference.

READ ALL INSTRUCTIONS BEFORE USING.

IMPORTANT SAFEGUARDS

When using your electrical appliance, basic safety precautions should always be followed, including the following:

Requirements

- ▶ Read the instruction manual in full to familiarise yourself with the product before the first use.
- ▶ This appliance can be used by children from 8 years and above and persons with reduced physical, sensory or mental capabilities, or lack of experience and knowledge, if they have been given supervision or instruction concerning use of the appliance in a safe way and understand the hazards involved.
- ▶ Children shall not play with the appliance.
- ▶ Cleaning and user maintenance shall not be made by children without supervision.
- ▶ Use this appliance only for its intended purpose.

Hazards



Danger! Electric shock due to damage to appliance

- ▶ Do not operate the appliance with a broken cord or plug, or if the appliance malfunctions, or is dropped or damaged in anyway.
- ▶ Any servicing or repair must be performed by Wahl (UK) LTD or a suitably qualified professional.
- ▶ Only use the attachments supplied with this product. The use of attachments that are not supplied by the manufacturer may cause fire, electric shock or injury and damage to the appliance



WARNING: Do not use this appliance near bathtubs, showers, basins or other vessels containing water.



Danger! Electric shock due to penetration of liquid.

- ▶ To protect against risk of electrical shock, never immerse the unit or let it come into contact with water or any other liquids. Do not use the unit with wet hands. If the appliance should become wet, damp or fall in water, remove plug from mains socket immediately. Do not put your hands in the water.



Warning! Injuries due to incorrect handling

- ▶ Switch off the appliance and unplug from outlet when not in use, before putting on or taking off attachments and also before cleaning the appliance.
- ▶ Never touch or allow contact with moving parts while in motion, keep hands, hair, clothing and other utensils away from the moving parts during operation to prevent an accident, injury or damage to the appliance.
- ▶ As a precaution safety glasses should be used at all times, when using this appliance. Long hair should be tied back and jewellery should be removed to avoid any contact with moving parts of the machine.
- ▶ Never operate this appliance with the air openings being blocked or while on a soft combustible surface, such as a bed or sofa, where air openings may be blocked. Keep the air openings (if any) free from lint, hair or the like.



Caution! Danger of product damage

- ▶ Never use your appliance without paying attention! Always unplug this appliance from the electricity outlet immediately after use or when left unattended.

- ▶ Do not let the cord hang over the edge of the work surface or let it touch any hot surfaces.
- ▶ Do not wrap the cord around the appliance.
- ▶ Do not use outdoors or in damp areas.
- ▶ Never carry the unit by its power cord.
- ▶ Do not drop or insert any object into any opening.



WARNING: KEEP THE APPLIANCE DRY.

PET NAIL GRINDER

OPERATING INSTRUCTIONS

1. Using your thumb, apply light to moderate pressure to your pet's pads in order to separate their toes. Hold paw firmly.
2. Turn appliance ON. The ON/OFF switch is located on the front of the appliance.
3. For best results, start filing from the bottom of the nail, slowly moving toward the tip. Apply consistent pressure, moving the grinder from side to side on each nail.



WARNING: Do not over-file or apply excessive pressure.

4. To avoid tangling of hair on long-haired breed dogs, push hair away from pets paw before using the appliance. For best results, use a nylon stocking over pets paw and push nails through stocking.
5. For larger dogs, position the front paw forward in order to file nails.
6. For smaller animals, hold their paw up and position it below their body. Pay extra attention not to entangle hair.

CHANGING ATTACHMENTS

1. Ensure appliance is in the OFF position before changing attachments.
2. To unlock the locking nut, simply press on the release button located at the top/front of the machine.
3. Press your thumb firmly on the release button; turn the locking nut counter clockwise until the attachments release.
4. While pressing on the release button, insert attachment head as far as it can go. Turn the locking nut clockwise until it tightens and is secured into place.
5. Remove thumb from release button.

APPLYING FILING BANDS TO FILING DRUM

1. Select either the 60 or 100 sanding grit filing band (60 grit medium sanding band for quick efficient filing down of your pets nail; 100 grit fine filing band for smoothing uneven rough nails).
2. Place the filing band over the filing drum until it is in place (please note, you will find it sits loosely over the grinding drum). In order to properly secure its placement, use a screw driver to adjust the screw at the top of the filing drum. Screwing it in a clockwise direction will allow the drum to expand, creating the perfect fit.




NOTE: Ensure Grinding and Filing attachments are properly secured before use.

CLEANING AND MAINTENANCE

1. After each use, remove any debris and dust from the grinder by using a soft brush.
2. To clean the housing, use a soft, dry cloth.
3. For maximum efficiency, ensure grinding attachments and filing bands are properly replaced when worn and blunt.
4. Periodically examine tool for any wear or damage.
5. To order replacement accessories, please visit www.wahl.co.uk.

WIRING

 **WARNING:** If the supply cord is damaged it must be replaced by the manufacturers service agent or a similarly qualified person in order to avoid a hazard.

This product must only be used with the transformer supplied.

DISPOSAL



Handle with care! Environmental damage in the case of incorrect disposal.

Correct disposal will ensure environmental protection and prevent any potentially harmful impacts on people and the environment.

Adhere to the relevant legal requirements when disposing of the appliance.

Information on the disposal of electrical and electronic appliances in the European Community:



Within the European Community, national regulations are specified for the disposal of electrical appliances, based on EU Waste Electrical and Electronic Equipment Directive 2012/19/EU (WEEE). In accordance with this, the appliance can no longer be disposed of with the local or domestic waste.

The appliance will be accepted free of charge by local collection points or recycling centres.

PET NAIL GRINDER

GUARANTEE

This product is guaranteed against defects in material and workmanship for a period of 2 years from the date of original purchase or receipt as a gift.

Should this product become defective during the guarantee period, return it to the store of purchase together with your proof of purchase for repair or replacement.

Alternatively within the guarantee period you can return the product to Wahl (UK) Ltd who will repair any such defect or elect to replace the product or any part of it, without charge, provided there is proof of purchase. Should a replacement be offered this will not extend the original guarantee period.

The guarantee becomes invalid in the case of misuse, alteration or repair by unauthorised persons.

This guarantee does not include blades, cables, shaver heads, foils and cutters etc., which are consumable parts.

This product is designed for domestic use only and use within a professional environment will invalidate the guarantee.

This guarantee in no way affects your rights under law in the United Kingdom.

WAHL (UK) LIMITED
STERLING HOUSE,
CLIPPER CLOSE,
RAMSGATE, KENT
CT12 5GG.

CUSTOMER SERVICES **T**: 01227 740066
www.wahl.co.uk

Form No. ZB041
Rev5 08-22