



Lithium Ion Trimmer
Instructions

Lithium Ion Trimmer

Please read all instructions carefully to familiarise yourself with your new Wahl trimmer before using.

Save these instructions for further reference.

For any further assistance or information call Customer Services on
T: 01227 740066
or visit
W: www.wahl.co.uk
E: customer.services@wahl.co.uk

CONTENTS

IMPORTANT SAFEGUARDS	Page 3
OPERATING INSTRUCTIONS	Page 5
CLEANING AND STORAGE	Page 6
TROUBLE SHOOTING	Page 6
CARING FOR YOUR TRIMMER	Page 6
BLADE CARE	Page 6
SPECIAL FEATURES	Page 7
WIRING	Page 13
BATTERY REPLACEMENT, REMOVAL AND DISPOSAL	Page 13
GUARANTEE	Page 14

Please retain this leaflet for future reference.

READ ALL INSTRUCTIONS BEFORE USING.

IMPORTANT SAFEGUARDS

When using your electrical appliance, basic safety precautions should always be followed, including the following:

1. This appliance can be used by children from aged 14 years and above and persons with reduced physical, sensory or mental capabilities, or lack of experience and knowledge, if they have been given supervision or instruction concerning use of the appliance in a safe way and understand the hazards involved. Children shall not play with the appliance. Cleaning and user maintenance shall not be made by children without supervision.
2. Switch off the appliance and unplug from outlet when not in use, before putting on or taking off attachments and also before cleaning the appliance.
3. Never use your appliance without paying attention. Except when charging always unplug this appliance from the electricity

Lithium Ion Trimmer

outlet immediately after using.

4. Do not operate the appliance with a broken cord, plug or charger, or if the appliance malfunctions, or is dropped or damaged in anyway.
5. Do not wrap the cord around the appliance.
6. Any servicing or repair must be performed by an authorised service representative.
7. Do not use outdoors or in damp areas.
8. The use of attachments that are not supplied by the manufacturer may cause fire, electric shock or injury and damage to the appliance.
9. To protect against risk of electrical shock, never immerse the unit or let it come into contact with water or any other liquids. Do not use the unit with wet hands. If the appliance should become wet, damp or fall in water, remove plug from mains socket immediately. Do not put your hands in the water. Do not take into bathroom.
10. Never carry the unit by its power cord.
11. Do not drop or insert any object into any opening.
12. Use this appliance only for its intended purpose.

13. Exhausted batteries/rechargeable batteries should not be disposed of in the household waste. Dispose of them in a completely discharged state in accordance with local legal regulations. Do not throw into fire where heat could cause them to rupture.



Danger of explosion

- ▶ Never use the appliance where aerosol (spray) products are being used or where oxygen is released.

⚠ WARNING: KEEP THE APPLIANCE DRY

OPERATING INSTRUCTIONS

RECHARGING

1. This trimmer is conveniently designed for household use. It should be allowed to charge 1 hour before first use.
2. Remove the trimmer, recharging transformer and accessories from the packing material.
3. Connect the transformer to the trimmer. BE SURE TRIMMER IS IN THE "OFF - 0" POSITION WHEN CHARGING.
4. Plug the recharging transformer into any convenient electrical outlet at the correct voltage.
5. When trimmer is low in power, it should be connected to the transformer and plugged into an outlet to assure maximum power is available when it is next used. This transformer is designed to completely charge the battery without overcharging. Do not use the trimmer while it is charging.
6. The battery will take approximately 60 minutes to charge. The Lithium Ion Trimmer also has quick charge capability.
7. Insert only recharging transformer plug supplied by the manufacturer into charger receptacle.

Lithium Ion Trimmer

TROUBLESHOOTING

If your Trimmer does not seem to take a charge, check the following before returning it for repair:

1. Check outlet to make sure it is working by plugging in another appliance.
2. Make sure the outlet simply is not connected to a light switch which turns the power at the outlet off when lights are turned off.
3. Be sure the trimmer is properly connected to the recharging transformer, all connections are secure and the switch on the trimmer is turned "OFF - 0."
4. If your electricity is connected to a master power switch, we suggest the trimmer be disconnected from the charger anytime the master switch is off. Leaving the unit plugged into a dead outlet or an unplugged charger will drain the battery.
5. If trimmer does not run and it is completely charged, turn the unit "ON - I" and pinch or push the blades manually. (Oil may have dried out between the blades, so they may be temporarily stuck together.)

CARING FOR YOUR TRIMMER OILING BLADES

For best results, put one or two drops of Wahl Clipper Oil on the blades only when necessary, or approximately once a month. Motor bearings are permanently lubricated—do not attempt to oil.

When oiling your trimmer, turn the trimmer "ON - I," hold the unit with the blades facing DOWN and squeeze one or two drops of oil onto the blades. Wipe off excess oil with soft cloth.

NOTICE—DO NOT OVER OIL!

Excessive oiling or application of liquids will cause damage if allowed to seep back into motor.

BLADE CARE

Trimmer blades have precision-hardened, ground and lapped cutting teeth. Blades should be handled carefully and never bumped or used to cut dirty or abrasive material. Never rinse the blades with water, or the blades may rust. Clean with the included brush.

CLEANING/STORAGE

Before storing your trimmer, use the cleaning brush to whisk any loose hairs from the unit and the blades. For units with a soft-touch grip, use a

Lithium Ion Trimmer

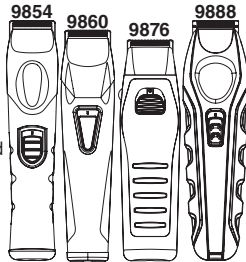
damp cloth to wipe down the body of the trimmer, taking care not to get the blades wet. Store unit in such a manner so that blades are protected from damage.

When the trimmer is not in use, the trimmer guide/blade guard attachment should be in place to protect the blades.

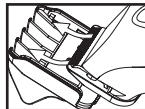
This appliance should be stored in a manner where it is not subjected to Crushing, Heating above 100°C (212°F), or Incineration.

SPECIAL FEATURES:

Your trimmer has been designed with several advanced features to help you get perfect results every time you trim. Your trimmer may be used to neatly trim goatees, beards, mustaches, neckline, sideburns around the ears and eyebrows, or anywhere you may need grooming. It also makes a great all-around family trimmer for mini haircuts and touch ups between trips to the barber or to clean up the shape of the neck.



- ▶ **Soft-Touch Grip (9854, 9860, 9888)** allows you to hold the trimmer in a comfortable position for precision trimming.
- ▶ **An Ergonomic Shape and Gripping Horizontal Bars (9876)** for added comfort, designed so you always hold the trimmer in a comfortable position for precision trimming. The shape also provides optimum trimming visibility.
- ▶ **A Rotating Head (9876)**. The trimming head rotates 360 degrees, providing two trimming positions. This allows you to achieve the optimum ergonomic relationship between the hand, the trimmer and the face. Rotate the head to the desired position as follows. With the switch in the "OFF - 0" position, depress the lock button and rotate the head clockwise or counterclockwise 360 degrees.
- ▶ **A 6-Position Trimming Guide** makes achieving a consistent trim easy every time. The guide can be removed (providing a seventh cutting position) and reattached without changing the preset cutting length, so once you have found the perfect length, there's no guesswork in achieving it every trim. The trimming guide is a two-piece assembly, consisting

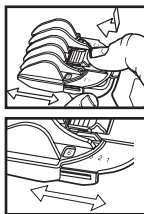


Lithium Ion Trimmer

of a base and a comb. It should not be disassembled.

To attach the guide, simply slide it on at a slight angle and press the release tab down to secure in position.

To remove the guide, gently push up on the release tab and slide the assembly away from the trimmer. Adjust the trimming length by pressing on the thumb lever and moving the comb forward or backward to the desired setting.

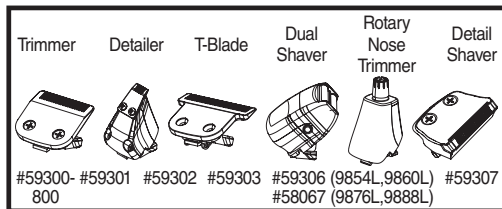


- ▶ **A Detachable blade system** enables you to quickly change from a standard-width blade for full grooming to a narrow-width blade for detail trimming around a mustache, goatee, or anywhere to define the hair line and clip any stray whiskers.



To remove attachment, simply pull top edge of blade away from body unit. To attach, align back tab of attachment head to cavity on the inner edge of trimmer unit and push down on top of blade.

Should blades become damaged or dull or if you want additional attachment heads for your trimmer, you may purchase them from Wahl. Be sure to ask for the following attachment with part number from our service and repair department (see last page for contact information):



The trimmer you purchased may not have all of these heads, but they will all work with your trimmer if you wish to purchase them. You may order additional heads.

- ▶ Self-sharpening blades are high compression, high-carbon steel, made to maintain their shape and sharpness for extended periods.

TRIMMING AND EDGING YOUR BEARD

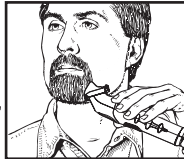
The following are suggested trimming steps and trimmer positions. You may find different procedures work better for you.

1. Comb your beard in the direction that it grows to help reveal stray hairs that

Lithium Ion Trimmer

may be longer than the others.

2. Attach the 6-position trimming guide to trim and taper your beard. Begin with the guide set at a long trimming length. Trim toward your chin in smooth, overlapping strokes, following the lay of your beard. If you trim against the way your beard naturally lays, the trimmer will cut the hair much shorter than the marked length.

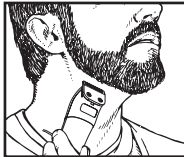


Adjust the trimming guide to progressively shorter settings until you reach the desired length of beard. You may wish to set the trimming guide attachment to cut closer near the ear and down under the chin, changing to a longer setting toward the front of the face and point of your chin. When the trimming guide is removed, it will remain at its last length setting until you change it.

#1	Stubble Length	(2 mm)
#2	Short	(4 mm)
#3	Medium Short	(6 mm)
#4	Medium	(8 mm)
#5	Medium Long	(10 mm)
#6	Long	(12 mm)

Always be sure the trimming guide is locked solidly into the desired position before you start to trim.

3. To cut the outline of your beard, remove the trimming guide. Starting under your chin and working back toward your jawbone and ears, cut the outer perimeter of your beard underneath the jawbone. Continue the line all the way up to the ears and hairline.



4. Accentuate your beard line by using the trimmer in a downward motion. Start at the line you've created and, working from the chin back toward the ears, trim the area right under your beard line.
5. Define the upper part of your beard using the same technique.

6. For a neater finished look, replace attachment blade to the detail blade forward. Use this blade for fine, detail trimming anywhere it is needed, such as at the sideburns near the ears, goatees, etc.



Lithium Ion Trimmer

DETAILING NECKLINES, SIDEBURNS, MUSTACHES & BEARDS using trimmer head.

Slowly move trimmer downward on desired areas to neatly trim and shape.

TRIMMING ARM & LEG HAIR using trimmer head.

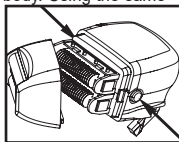
Simply glide the trimmer over your arm or leg until desired hair length is achieved. The first time you trim the hair, start by using a longer setting on the guide comb on the trimmer, then use progressively shorter settings if a shorter length is preferred.

TRIMMING CHEST & STOMACH using trimmer head.

Glide the trimmer over your torso region, in an upward motion until desired hair length is achieved. For tight, scratch-free trimming, use the #1 guide comb.

FOR THE CLOSEST LOOK. After trimming, attach the shaver head.

The shaver makes for the perfect tool to groom the total body. Using the same technique, as mentioned prior, you can groom wherever you feel a need. Shave against hair growth while stretching the skin. After every use, remove the shaver foil by pressing both side buttons and carefully using cleaning brush provided.



Lithium Ion Trimmer

TRIMMING PRIVATE AREAS with the trimmer & detailer head.

1. Volume reduction using trimmer head. Attach guide comb and select a long trimming length. Begin trimming, starting at the top and working down. Use progressively closer settings to get the "look" and length you prefer.
2. For hard to reach or tight areas, use the detailer head. Always pull skin taut. Then slowly move the detailer through area to trim until desired look is accomplished.
3. Shave in your private areas by gently shaving in the desired area and always keep the skin taut.

Trimming Nose Hair using detailer head.

Make sure the nasal passages are clean. Slowly move the detailer in and out of each nostril, no more than 1/4-inch deep.

Trimming EAR Hair using detailer head.

Make sure the outer areas of the ears do not contain any wax. Hold the ear flat with one hand and carefully insert detailer no more than 1/4-inch into the outer ear.

CAUTION: Do not insert the detailer or any other foreign object into the inner ear. For hair growing on the outside of the ear, simply move the detailer slowly along the edges of the ear.

Trimming Eyebrows using detailer head.

Slowly move detailer to neatly trim stray hairs. For precise, even trimming, slowly move the detailer closer or farther away from eyebrows to achieve desired length. Do not press against brow as it may remove too much hair.

FADE CUT using a T-Blade

Start at the temple and cut all the way around the head to establish the ultimate location of the fade line. Always cut against the grain for the shortest cut. Don't force the blade through the hair. Let the trimmer do the work.

1. Next, cut around the head again and up the nape of the neck to the fade line, brushing away the cut hair as you go. Pull the scalp taut with the thumb for the closest cut. Turn the trimmer upside down when necessary to keep cutting against the grain. Make sure both sides of the head are even.

Lithium Ion Trimmer

2. For the top of the head, cut with the grain using the individual guide comb attachments. The smaller the number of the comb, the shorter the cut. Comb or brush the hair as you cut for an even end result.
3. To complete the fade, blend the hair at the fade line by trimming up and out across the line and against the grain all the way around the head. Then, repeat all around, turning the trimmer upside down and cutting downward. The final objective is to blend the hair so there is no real line, just a perfect fade from bald to very short hair. You can achieve this by using the #1 individual guide comb attachment. Continue combing and cutting until you achieve the desired effect.
4. To create a part, pick a spot off-center. Pull the scalp tight and with the end of the blade perpendicular to the head, move the trimmer back and forth to cut a line. Comb through it and cut again to make sure the cut is precise.

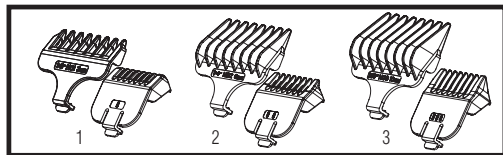
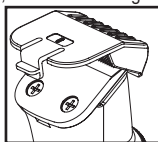
TRIMMING WITH ATTACHMENT COMBS

Your Trimmer includes three trimming attachments; stubble, medium and long.

The stubble guide has 1 bar, the medium-cut attachment has two bars and the long-cut attachment has three bars.

These attachments are ideal for blending, tapering and defining beards, as well as for achieving a “close trim” stubble look around the face. To use the attachments, go with the hair direction.

To achieve closer looks, go against the hair direction.



Lithium Ion Trimmer

WIRING

⚠ WARNING: IF THE TRANSFORMER IS DAMAGED IT MUST BE REPLACED IN ORDER TO AVOID A HAZARD. THIS PRODUCT MUST ONLY BE USED WITH THE TRANSFORMER SUPPLIED. SHOULD A REPLACEMENT BE REQUIRED CONTACT WAHL CUSTOMER SERVICES.

WASTE ELECTRICAL & ELECTRONIC EQUIPMENT DIRECTIVE 2002/96/EC (WEEE)



At the end of this products life it should not be disposed of with general household waste.

Care should be taken to dispose of in a suitable manner in accordance with your Local Authority regulation.

Battery Replacement, Removal and Disposal

Lithium-Ion Battery Replacement

For battery replacement the entire, intact clipper or trimmer should be sent to: Wahl (UK) Ltd Customer Services (the address can be found on the reverse of this booklet) or taken to a suitably qualified professional. The battery should only be replaced by the original manufacturers spare, for safety reasons a substitute should not be used.

Do not attempt to remove the battery. Lithium-Ion batteries can explode, catch fire, and/or cause burns if disassembled, damaged or exposed to water or high temperatures.

Lithium Battery Disposal

Do not dispose of this product or the Lithium battery in the normal household waste.

The product should be returned to Wahl Customer Services where we offer a take back service or taken to a local collection facility where they will be dealt with safely and sent for the appropriate recycling.

Lithium Ion Trimmer

GUARANTEE

This product is guaranteed against defects in material and workmanship for a period of 5 years from the date of original purchase or receipt as a gift.

Should this product become defective during the guarantee period, return it to the store of purchase together with your proof of purchase for repair or replacement.

Alternatively within the guarantee period you can return the product to Wahl (UK) Ltd who will repair any such defect or elect to replace the product or any part of it, without charge, provided there is proof of purchase. Should a replacement be offered this will not extend the original guarantee period.

The guarantee becomes invalid in the case of misuse, alteration or repair by unauthorised persons.

This guarantee does not include blades, cables, shaver heads, foils and cutters etc., which are consumable parts.

This product is designed for domestic use only and use within a professional environment will invalidate the guarantee.

This guarantee in no way affects your rights under law in the United Kingdom.

Lithium Ion Trimmer

WAHL (UK) LTD
STERLING HOUSE
CLIPPER CLOSE
RAMSGATE, KENT
CT12 5GG

CUSTOMER SERVICES T: 01227 740066
www.wahl.co.uk

Form No. ZB640
Rev1 09-18