



**LITHIUM PRO SERIES CLIPPER  
INSTRUCTIONS**

## LITHIUM PRO SERIES CLIPPER

Please read all instructions carefully to familiarise yourself with your new clipper before using.

Save these instructions for further reference.

For any further assistance or information call Customer Services on

T: 01227 740066

or visit

W: [www.wahl.co.uk](http://www.wahl.co.uk)

E: [customer.services@wahl.co.uk](mailto:customer.services@wahl.co.uk)

## CONTENTS

<b>GENERAL USER INFORMATION</b>	Page 3
<b>IMPORTANT SAFEGUARDS</b>	Page 4
<b>OPERATING INSTRUCTIONS</b>	Page 8
<b>CLIPPER USE &amp; MAINTENANCE</b>	Page 11
<b>CLEANING</b>	Page 13
<b>TROUBLESHOOTING</b>	Page 14
<b>LITHIUM-ION BATTERY REPLACEMENT</b>	
<b>REMOVAL AND DISPOSAL</b>	Page 14
<b>CLIPPING &amp; TRIMMING DOGS</b>	Page 15
<b>TRIMMING HORSES</b>	Page 19
<b>WIRING</b>	Page 21
<b>DISPOSAL</b>	Page 21
<b>GUARANTEE</b>	Page 22

## GENERAL USER INFORMATION

Information about using the operation manual

- ▶ Before using the appliance for the first time, you must read and understand the operation manual completely.
- ▶ Consider the operation manual as part of the product and store it in a safe and accessible place.
- ▶ Include this operation manual if passing the appliance on to a third party.
- ▶ In the case of conflicts with national safety specifications or instructions, the national requirements must be followed.

Explanation of symbols and notes



**DANGER**

Danger of electric shock which may result in serious physical injury or death.



**DANGER**

Danger of explosion which may result in serious physical injury or death.



**WARNING**

Warning of possible physical injury or a health risk.



**CAUTION**

Information about danger of material damage.



Note with useful information and tips.

- ▶ Action to be taken by owner.
1. Carry out these actions in the sequence described.
- List

## LITHIUM PRO SERIES CLIPPER

Please retain this leaflet for future reference.

**READ ALL INSTRUCTIONS BEFORE USING.**

### **IMPORTANT SAFEGUARDS**

When using this electrical appliance, especially when children are present, basic safety precautions should always be observed including the following.

#### **Requirements**

- ▶ Read the instruction manual in full to familiarise yourself with the product before the first use.
- ▶ This appliance can be used by children from aged 14 years and above and persons with reduced physical, sensory or mental capabilities, or lack of experience and knowledge, if they have been given supervision or instruction concerning use of the appliance in a safe way and understand the hazards involved. Children shall not play with the appliance. Cleaning and user maintenance shall not be made by children without supervision.
- ▶ Use this appliance only for its intended purpose.

## Hazards



### **Danger! Electric shock due to damage to appliance**

- ▶ Do not operate the appliance with a broken cord, plug or charger, or if the appliance malfunctions, or is dropped or damaged in any way.
- ▶ Any servicing or repair must be performed by Wahl (UK) Ltd or a suitably qualified professional.
- ▶ The use of attachments that are not supplied by the manufacturer may cause fire, electric shock or injury and damage to the appliance.



### **Danger! Electric shock due to penetration of liquid.**

- ▶ To protect against risk of electrical shock, never immerse the unit or let it come into contact with water or any other liquids. Do not use the unit with wet hands. If the appliance should become wet, damp or fall in water, remove plug from mains socket immediately. Do not put your hands in the water. Do not take into bathroom.



### **Danger of explosion**

- ▶ Never use the appliance where aerosol (spray) products are being used or where oxygen is released.

## LITHIUM PRO SERIES CLIPPER

- ▶ Exhausted batteries/rechargeable batteries/ Lithium batteries should not be disposed of in the household waste. Dispose of them in a completely discharged state in accordance with local legal regulations. Do not throw into fire where heat could cause them to rupture.



### **Warning! Injuries due to incorrect handling**

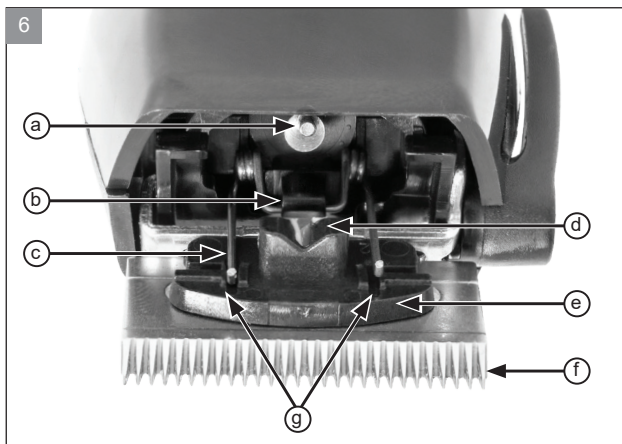
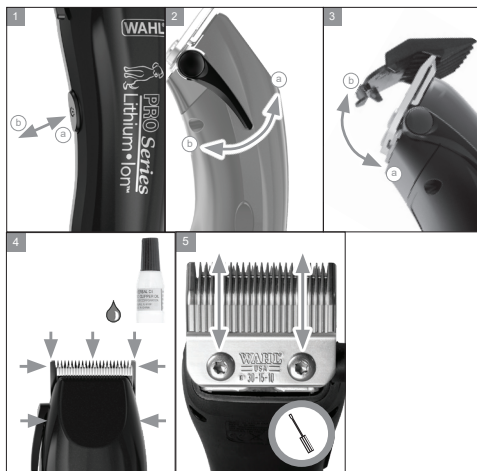
- ▶ Switch off the appliance and unplug from outlet when not in use, before putting on or taking off attachments and also before cleaning the appliance.
- ▶ Never use your appliance without paying attention! Except when charging, always unplug this appliance from the electricity outlet immediately after using.



### **Caution! Danger of product damage**

- ▶ Do not wrap the cord around the appliance / charger.
- ▶ Do not use outdoors or in damp areas.
- ▶ Never carry the unit by its power cord.
- ▶ Do not drop or insert any object into any opening.
- ▶ Use this appliance only for its intended purpose.
- ▶ During use, do not place or leave appliance where it may be damaged by an animal or exposed to weather.
- ▶ The blades on your clipper have fine teeth for precise cutting. Handle carefully when using against the animals skin to avoid injury or irritation.

## LITHIUM PRO SERIES CLIPPER



## LITHIUM PRO SERIES CLIPPER

### **OPERATING INSTRUCTIONS**

#### **CHARGING THE BATTERY**

Before the appliance is used for the first time, it should be charged for 5 hours, you will need to plug the transformer directly into the unit but be sure the clipper is switched OFF when charging. When the battery is fully charged, the equipment can be used for up to 120 minutes continuous run time. It will then take 3 hours to fully recharge the battery again.

#### **CHARGING PRECAUTIONS**

- Only charge the device when charging is required. A charge is required when the product begins to slow down or has trouble maintaining speed while performing its intended function. (Note: If the product is cord/cordless, and you do run out of charge, you may continue running the device corded from the mains to complete your task.)
- If the device is fully discharged, apply a charge right away to prevent damage or inability to recharge.
- A partial charge is fine; Lithium-Ion does not require a full charge.
- Charge the device at moderate temperatures. Do not charge below freezing.
- Do not leave the device connected to the charger when the charger is not plugged into an outlet for charging.
- Perform regular maintenance on the device including keeping the blades oiled, clean, and free of debris to prevent taxing the battery.



## LITHIUM PRO SERIES CLIPPER

### **FOR DIRECT PLUG-IN OPERATION**

1. Should you need to use the appliance in corded mode when the battery is fully discharged, it is best to charge the appliance in OFF position for several minutes before use. During use, you may notice a change in blade speed. This is perfectly normal. The clipper will still perform adequately in corded mode with fully discharged batteries.
2. Connect the appliance to the transformer cord, and plug the wall transformer into an electrical outlet.
3. Move the switch to ON position.
4. After use, turn to OFF position then disconnect wall transformer from outlet.

### **BLADES**

- Blades do not become dull from cutting hair, they are dulled by abrasive particles on the hair, such as dirt, sand and grease etc.
- Blades will not cut if abrasive particles are picked up and carried by the oil film between the blades. These particles tend to hold the blades apart and cause chewing and pulling of the hair instead of clean cutting.
- The cutting blades furnished with Wahl Animal clippers are made of special high carbon steel scientifically heat-treated for correct hardness. Years of experience have created a special process for grinding these blades to a superior sharpness. Oil blades before and during use.
- Oiling the blades performs two distinct functions.
  - a. Provides a low friction, very thin film lubricant between the cutting blades so that they can take a

## LITHIUM PRO SERIES CLIPPER

- full cutting stroke without becoming hot from friction.
- b. Flushes abrasive particles and hair out from between the blades.

### CHANGING THE BLADE SET



**Warning! Injuries and material damage due to incorrect handling.**

1. Switch the appliance off using the on/off switch (fig. 1a/b) and disconnect from the power supply.
2. Undo the screws on the blade set, (T20 Torx screwdriver required) remove the bottom blade and the top blade (fig. 5).
3. To replace the blade first check that the tension spring (fig 6c) is properly located under the lug in centre of housing (fig 6b).
4. Turn motor cam so that the pin is in the top position (fig 6a).
5. Place the cam follower (fig 6e) on to the small blade (fig 6f) ensure the cam follower is positioned as shown.
6. Put a smear of grease into the cam slot on cam follower (fig 6d).
7. Position the small blade assembly on to the head of the clipper, ensure the ends of the spring line-up with the slots on the cam follower (fig 6g) and the cam slot lines-up with the pin on the motor cam.
8. Press and hold blade assembly against head of the clipper with one hand, take care as you will be pushing against the spring tension, with the other

## LITHIUM PRO SERIES CLIPPER

hand slide the large blade over the top of the small blade, hold tight with one hand and replace the blade screws.

The torx screws are self-aligning, no further blade alignment is required.

Ensure screws are tight then Oil blade assembly and test. If blade assembly is not moving correctly check that spring and cam are correctly aligned with the cam follower (fig 6).



**Warning! Injuries due to incorrect handling.**

### **CLIPPER USE AND MAINTENANCE**

- A fully charged appliance will deliver a maximum of 120 minutes of continuous trimming.
- To ensure maximum battery performance the appliance should be connected to the transformer and fully recharged after use. Once charged remove the appliance from the transformer and store in a cool, dry place. The transformer is designed to continuously charge the battery without overcharging.
- Use only the power source specified on the charger transformer.
- Feed the appliance through the hair only as it will cut. Feeding too fast, wedges the hair clippings between the blades, preventing them from cutting properly. **DO NOT CUT WET HAIR.**
- It is acceptable for the unit to become somewhat warm during normal use.
- Avoid pushing the blades into the skin, taking extra care around sensitive areas or areas where folds of skin are present. The large flat surface of the blade

## LITHIUM PRO SERIES CLIPPER

should be parallel to the skin surface. Do not allow the sharp blade tips to go into the skin as this will cause injury.

- During clipping it may be necessary to clean and oil the blades. Place a small drop of Wahl Clipper Oil on the blades while the clipper is running (fig. 4).
- To prolong blade life, do not use the appliance on dirty or wet coats.
- Be careful not to drop the appliance or to damage or break any teeth on the blades. A new blade should be purchased if the teeth are damaged.
- Always oil the blades and replace the blade guard when the clipper is not in use.
- Keep the cord untwisted and unobstructed. When stored, the cord should be coiled and the unit placed in a dry place, away from children.
- Do not store the appliance in a wet or moist environment.
- Do not touch any of the internal mechanisms. If the unit should need repair, do not repair it yourself. Return it to Wahl UK Ltd.

## TAPER LEVER

Some clippers are equipped with an adjustable taper lever that changes the closeness of your cut. When the lever is in the uppermost position, the blades will give the closest cut (fig. 2a) Pushing the lever downward gradually increases the cutting length (fig. 2b)

### **ATTACHMENTS**

This appliance can be operated with attachment combs. Attachment combs can be used to extend the cutting length range. To attach the combs, hold comb with teeth up and snap it firmly to the bottom of the clipper blade. (fig. 3) For uniform cutting, allow the clipper to cut its way through the hair. Do not force it through at a faster rate.

### **CLEANING**



Always disconnect the appliance from the wall socket before any cleaning operation.

- To clean the unit, use either a clean dry or dampened cloth. Do not use abrasive cleaning agents or scrub pads. Do not use alcohol or solvents.
- To remove hair from between the blades, use the cleaning brush provided.
- After each use, blades should be cleaned and oiled. Put a small drop of Wahl Clipper Oil between the blades while the trimmer is running. Wipe off excess oil so it does not run into the motor. (fig.4)
- Never immerse the appliance in water or any other liquid.

## LITHIUM PRO SERIES CLIPPER

### **TROUBLESHOOTING**

If your clipper does not seem to take a charge, check the following before returning it for repair:

- Check outlet to make sure it is working by plugging in another appliance.
- Be sure the clipper is properly connected to the recharging transformer, all connections are secure and the switch on the clipper is turned OFF.
- If your electricity is connected to a master power switch, we suggest the clipper be disconnected from the charger anytime the master switch is off. Leaving the unit plugged into a dead outlet or an unplugged charger will drain the battery.
- If the clipper does not run and is completely charged, turn the unit ON and pinch or push the blades manually. (Oil may have dried out between the blades, so they may be temporarily stuck together.)

### **LITHIUM-ION BATTERY REPLACEMENT REMOVAL AND DISPOSAL**

For battery replacement the entire, intact clipper or trimmer should be sent to: Wahl (UK) Ltd Customer Services (the address can be found on the reverse of this booklet) or taken to a suitably qualified professional. The battery should only be replaced by the original manufacturers spare, for safety reasons a substitute should not be used.

Do not attempt to remove the battery. Lithium-Ion batteries can explode, catch fire, and/or cause burns if disassembled, damaged or exposed to water or high temperatures.

## LITHIUM PRO SERIES CLIPPER

### **LITHIUM BATTERY DISPOSAL**

Do not dispose of this product or the Lithium battery in the normal household waste.

The product should be returned to Wahl Customer Services where we offer a take back service or taken to a local collection facility where they will be dealt with safely and sent for the appropriate recycling.

### **CLIPPING & TRIMMING DOGS**

The first time you cut hair, cut only a small amount until you have become accustomed to how long each guide comb leaves the hair.

Ensure that you regularly remove trimmed hair from the blades and oil the blades during clipping.

Avoid pressing the blades strongly against the animal coat, being especially careful around uneven areas. (The blades should be passed through the coat in the direction of the lie of the hair with the flat blade surface resting on the hair and without significant pressure from the user.)

### **CLIPPING GUIDE GENERAL - FEET**

Have your dog sit facing you. Bring rear leg forward (fig.8) and clip sides of foot from nail to ends of toes. Clip on top of toes, stopping at ankle joint. Don't trim ankle.

Spread toes apart with thumb and finger (fig.9). Cut hair between toes, being careful not to nick the webbing. Spread bottom pads with thumb and clip between toes and pads, being careful not to nick foot webbing (fig.10). Touch up stray hair with scissors.

## LITHIUM PRO SERIES CLIPPER

### **FACE AND THROAT**

Be very careful around this area, clipping too close may cause razor burns. In most cases you should use the clippers in the same direction as the lie of the coat. However if you wish to obtain a closer cut, then the clippers may be used against the lie of the coat.

The clipper must not be used above or around the eyes.

When clipping ears lift them to ensure no creases or folds of skin are on the area to be clipped (fig.11).

Hold muzzle with your free hand. Cut from ear to the outside corner of the eye in a straight line.

Stretch the skin at the outside corner of the left eye upward and backward. Clip carefully under eye. Repeat on other side. With free hand, stretch the corner of the mouth with your thumb, using the rest of your hand to hold the mouth shut. Clip around mouth and side of face. Repeat on other side.

Holding muzzle, clip the area between the eyes and down the nose. To clip the muzzle, clip away from the eyes toward the nose.

Hold the dogs head straight, throat taught, and clip bottom of muzzle (fig.14) the adams apple is normally the stopping point of the cut but you may clip lower. Clip the rest of the throat toward the muzzle.



## LITHIUM PRO SERIES CLIPPER



fig 8



fig 9



fig 10



fig 11



fig 12



fig 13



fig 14



fig 15



fig 16

### STOMACH

Stand dog facing you. Lift front legs and clip from a point above the testicles or vulva in a straight line, use light pressure being careful not to nick the vulva, penis, testicles or nipples.

Cover them with your hand. Clip the hair on penis with the grain.

### BODY

**Tip:** Stop frequently while clipping to fluff the hair. It will help keep the hair even. Clip along the back, starting at the base of the skull, and cut down the middle of the back to the tail (fig.15). Shorten all the hair as shown in the illustration, starting at the neck (fig.16) clip hair between shoulders and hips. Clip under the chest from behind the front legs to the end of the rib cage. Scissor trim to touch up.

## LITHIUM PRO SERIES CLIPPER

### REAR LEGS

**Important:** Be careful when clipping around the armpit and the flank. There are areas of skin that are easy to cut; especially on older dogs whose skin has loosened. Brush the hair in the back of the legs in an upward and outward motion, to fluff. You can now shape the legs as full or as tapered as you wish.

Start by trimming any hair that falls over the foot (fig.17). Starting at ankle cut up to a hip a little hair at a time (fig.18). Once you are at the hip, blend hair so it tapers into shorter body hair. (When using guide combs on legs, complete your stroke; don't stop midway.) Repeat with other leg, making it the same size as the first leg. Touch up with scissors.

### FRONT LEGS

With the dog facing you, comb hair up and out. Trim front legs to match the back legs. Comb hair at shoulders and blend with shorter body hair. Comb hair on chest and between front legs; trim it to the length of the shoulder and body hair.

### EARS

With the dog facing you, clip from the top of the ear downward. Never turn the clipper in the other direction. Lay the ear in the palm of your hand. Clip the outside of the ear first and then the inside (fig.20). Hold ear with your free hand and scissor cut the sides. Be careful not to cut the ear itself (fig.21). Repeat with the other ear and touch up any stray hairs.

## LITHIUM PRO SERIES CLIPPER



fig 17



fig 18



fig 19



fig 20



fig 21

DESIRED LENGTH	ATTACHMENT	DIRECTION OF CUT
0.8mm-1.8mm	none	against the grain
1.2mm-2.7m	none	with the grain
3mm	comb #1	against the grain
6mm	comb #2	against the grain
10mm	comb #3	against the grain
13mm	comb #4	against he grain

### TRIMMING HORSES

This product is suitable for trimming areas including face, ears, head and fetlocks. It is not designed as a full body clipper.

- When using any electrical appliance around horses, Wahl recommends the use of a circuit breaker to minimise risk.
- Whilst trimming, take time to regularly brush hairs and dirt from the blades. We recommend that you use the hygienic spray to ensure grease and dirt particles are washed from the blade surface. This spray should be applied regularly during usage.
- Always re-oil the blades after using the hygienic spray and wipe away any excess fluid.
- This appliance is designed for trimming horses and ponies. Ensure the horse is dry, as clean as possible and brushed thoroughly to remove grease and dirt from the coat.
- Ideally have a responsible person to hold the horse Position the trimmer with the blade flat to the coat surface (45 degrees).

## LITHIUM PRO SERIES CLIPPER

- Without applying any downward pressure, pass the appliance through the coat working against the lay of the hair.
- Do not push the trimmer through the coat too quickly – this may cause hairs to get between the blades and separate them, thus reducing performance.
- Always keep the flat surface of the blades against the coat – do not push the teeth of the blades into the skin or operate the trimmer at 90 degrees.
- When negotiating areas with folds of skin (elbows, chin etc) pull out the skin to avoid the folds catching between the blades and cutting the animal.
- To achieve an even finish apply consistent pressure and clip against the hair.
- To reduce the closeness of the cut, the trimmer can be used following the lie of the hair.
- Regularly use the cleaning brush to flick away any hair from the blades and apply oil frequently.
- Never adjust the screws or tension system on the blade set.

## WIRING



**WARNING:** THIS PRODUCT MUST ONLY BE USED WITH THE TRANSFORMER SUPPLIED. SHOULD A REPLACEMENT BE REQUIRED CONTACT WAHL CUSTOMER SERVICE ON 01227 740066.



## DISPOSAL

**Handle with care! Environmental damage in the case of incorrect disposal.**

Correct disposal will ensure environmental protection and prevent any potentially harmful impacts on people and the environment.

Adhere to the relevant legal requirements when disposing of the appliance. Information on the disposal of electrical and electronic appliances in the European Community:

## WASTE ELECTRICAL & ELECTRONIC EQUIPMENT DIRECTIVE 2002/96/EC (WEEE)



At the end of this products life it should not be disposed of with general household waste. Care should be taken to dispose of in a suitable manner in accordance with your Local Authority regulation.



## LITHIUM PRO SERIES CLIPPER

### **GUARANTEE**

This product is guaranteed against defects in material and workmanship for a period of 2 years from the date of original purchase or receipt as a gift.

Should this product become defective during the guarantee period, return it to the store of purchase together with your proof of purchase for repair or replacement.

Alternatively within the guarantee period you can return the product to Wahl (UK) Ltd who will repair any such defect or elect to replace the product or any part of it, without charge, provided that there is proof of purchase. Should a replacement be offered this will not extend the original guarantee period.

The guarantee becomes invalid in the case of misuse, alteration or repair by unauthorised persons.

This guarantee does not include blades, cables, shaver heads, foils and cutters etc which are consumable parts.

This product is designed for domestic use only and use within a professional environment will invalidate the guarantee.

This guarantee in no way affects your rights under statutory law in the United Kingdom.

## LITHIUM PRO SERIES CLIPPER

WAHL (UK) LTD  
STERLING HOUSE  
CLIPPER CLOSE  
RAMSGATE, KENT  
CT12 5GG

CUSTOMER SERVICES T: 01227 740066  
[www.wahl.co.uk](http://www.wahl.co.uk)

Form No. ZB732  
Rev.2 09-18