



P R O F E S S I O N A L

## Cordless Clipper Instructions

Please read all instructions carefully to familiarise yourself  
with your new Wahl Clipper before using.

Save these instructions for further reference.

For any further assistance or information call Customer Services on

T: 01227 740066

or visit

W: [www.wahl.co.uk](http://www.wahl.co.uk)

E: [customer.services@wahl.co.uk](mailto:customer.services@wahl.co.uk)

## **CONTENTS**

<b>GENERAL USER INFORMATION</b>	Page 3
<b>IMPORTANT SAFEGUARDS</b>	Page 4
<b>TECHNICAL DATA</b>	Page 7
<b>DESCRIPTION OF PARTS</b>	Page 8
<b>OPERATING INSTRUCTIONS</b>	Page 10
<b>CLEANING AND MAINTENANCE</b>	Page 12
<b>BATTERY REPLACEMENT, REMOVAL &amp; DISPOSAL</b>	Page 12
<b>WIRING</b>	Page 13
<b>TROUBLESHOOTING</b>	Page 14
<b>GUARANTEE</b>	Page 15

## GENERAL USER INFORMATION

Information about using the operation manual

- ▶ Before using the appliance for the first time, you must read and understand the operation manual completely.
- ▶ Consider the operation manual as part of the product and store it in a safe and accessible place.
- ▶ Include this operation manual if passing the appliance on to a third party.
- ▶ In the case of conflicts with national safety specifications or instructions, the national requirements must be followed.

## Explanation of symbols and notes



### **DANGER**

Danger of electric shock which may result in serious physical injury or death.



### **DANGER**

Danger of explosion which may result in serious physical injury or death.



### **WARNING**

Warning of possible physical injury or a health risk.



### **CAUTION**

Information about danger of material damage.



Note with useful information and tips.

- ▶ Action to be taken by owner.
1. Carry out these actions in the sequence described.
  - List

Please retain this leaflet for future reference.

READ ALL INSTRUCTIONS BEFORE USING.

## **IMPORTANT SAFEGUARDS**

When using this electrical appliance, especially when children are present, basic safety precautions should always be observed including the following.

### **Requirements**

- ▶ Read the instruction manual in full to familiarise yourself with the product before the first use.
- ▶ This appliance can be used by children from aged 14 years and above and persons with reduced physical, sensory or mental capabilities, or lack of experience and knowledge, if they have been given supervision or instruction concerning use of the appliance in a safe way and understand the hazards involved. Children shall not play with the appliance. Cleaning and user maintenance shall not be made by children without supervision.
- ▶ Use this appliance only for its intended purpose.

## HAZARDS

### **Danger! Electric shock due to damage to appliance**

- ▶ Do not operate the appliance with a broken cord, plug or charger, or if the appliance malfunctions, or is dropped or damaged in anyway.
- ▶ Any servicing or repairs must be performed by Wahl (UK) Ltd or a suitably qualified professional.
- ▶ The use of attachments that are not supplied by the manufacturer may cause fire, electric shock or injury and damage to the appliance.



### **Danger! Electric shock due to penetration of liquid**

- ▶ To protect against risk of electrical shock, never immerse the unit or let it come into contact with water or any other liquids. Do not use the unit with wet hands. If the appliance should become wet, damp or fall in water, remove plug from mains socket immediately. Do not put your hands in the water. Do not take into bathroom.



## **Danger of explosion**

- ▶ This appliance must never be sprayed with aerosol (spray) products classified as flammable.
- ▶ Do not expose the appliance to temperatures below 0°C and above +40°C for any length of time. Avoid direct exposure to sunlight.



## **Warning! Injuries due to incorrect handling**

- ▶ Cutting blades may become hot after prolonged use.
- ▶ Switch off the appliance and unplug from outlet when not in use, before putting on or taking off attachments and also before cleaning the appliance.
- ▶ Never use your appliance without paying attention! Except when charging always unplug this appliance from the electricity outlet immediately after using.
- ▶ These appliances are intended for hair trimming and clipping only.



## Caution! Danger of product damage

- ▶ Do not wrap the cord around the appliance.
- ▶ During use do not place or leave the appliance where it may be damaged by an animal or exposed to the weather.
- ▶ Never carry the unit by its power cord.
- ▶ Do not drop or insert any object into any opening.

### Technical data

#### Hand-held appliance

Drive:	DC Motor
Battery:	Lithium Ion battery
Battery operating time:	XXL BATTERY pack: Up to 180 minutes
Dimensions (LxWxH):	178 x 47 x 57 mm approx.
Weight:	272 g Max.
Emission sound pressure level:	60 dB(A) @ 25 cm
Vibration:	< 2.5 m/s <sup>2</sup>

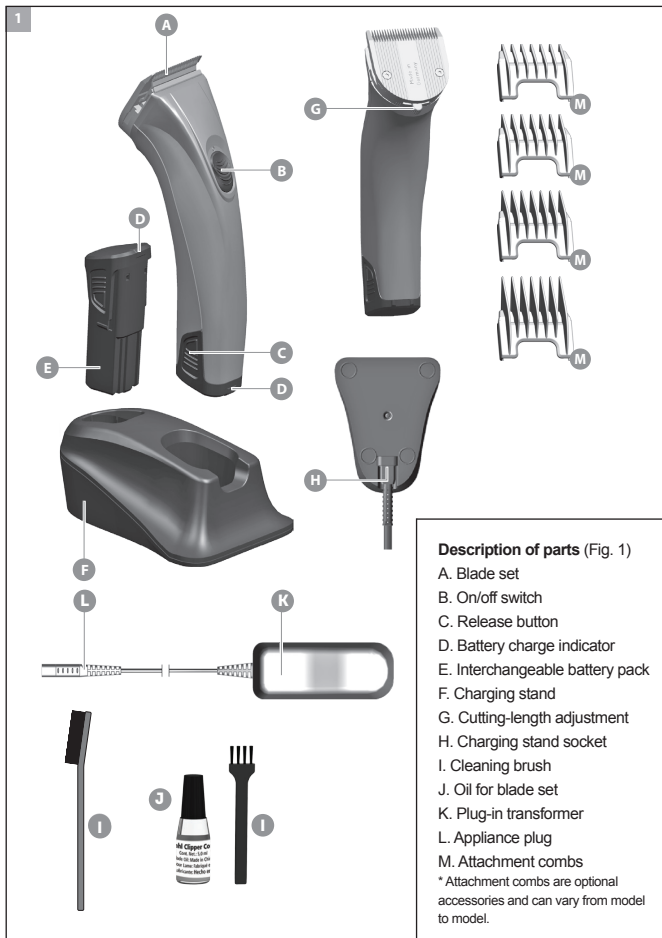
#### Charging Stand

Dimensions with accessories (LxWxH):	119 x 91 x 57 mm
Weight:	130 g

#### Plug-in transformer

Type:	Adapter 6000
Power consumption:	max. 12 W
Operating voltage:	100 – 240 V AC / 50/60 Hz

Operating conditions ambient temperature:	0°C – +40°C
---	-------------







## OPERATING INSTRUCTIONS

### **i** CHARGING THE BATTERY

This cordless clipper is supplied with two battery packs. While the appliance is in use, the second battery pack can be recharged on the charging stand. This means that the clipper is always ready for use. Before the appliance is used for the first time, each battery pack should be charged for approx 120 minutes.

1. Connect the appliance plug (Fig. 1L) on the plug-in transformer to the charging stand socket (Fig. 1H)
2. Connect the plug-in transformer to the mains socket (Fig. 2b).
3. Insert the battery pack into the recess of the charging stand (Fig. 4). The charging process starts. During charging, the charging indicator (D) flashes red. It should take around 120 minutes for the XXL BATTERY pack to charge to full capacity. *The second battery can remain in the charging stand so that a charged battery pack is always available.*
4. Once charging is complete, the charging indicator (D) lights up green.

### **i** BATTERY OPERATION Battery Operation

Switch on the appliance using the on/off switch and switch off after use (Fig. 1B).

- In case of insufficient maintenance of the blade set, the operating time can be reduced considerably. (See cleaning and maintenance section page 12)
- While in operation with a fully charged battery, the charging indicator (D) lights up green.
- Whenever the charging indicator (D) lights up red during operation, the battery pack needs to be recharged. You can now use the charged replacement battery pack.

### **To recharge the battery:**

1. Switch off the clipper using the on/off switch (Fig. 5b).
2. Press the release button (Fig. 1C) on the side and remove the battery pack (Fig. 3a).
3. Remove the charged battery pack (Fig. 4) from the charging stand and slide it into the hair clipper until it locates with an audible click (Fig. 3b).
4. Fit the flat battery pack to the charging stand (Fig. 4). See section Charging the battery.



## **OPERATION**

### **Setting the cutting length**

The cutting length can be adjusted to between 0.7mm and 3mm (5 possible positions) using the cutting length adjustment integrated into the blade set (Fig. 6).

### **Cutting with attachment combs**

The appliance can also be operated with attachment combs. In order to achieve the indicated cutting length, the cutting length adjustment lever should be set to position 1 (Fig. 6).

### **Attaching/removing the attachment comb**

1. Slide the attachment comb on to the blade set in the direction of the arrow until it reaches the limit (Fig. 7a).
2. The attachment comb can be removed by pushing it in the direction of the arrow (Fig. 7b).



## **CHANGING THE BLADE SET**

### **Removing the blade set:**

1. Switch the appliance off using the on/off switch (Fig. 5b) and disconnect from the power supply.
2. Push the blade set off the housing in the direction of the arrow (Fig. 8a). Remove the blade set.

### **Replacing the blade set:**

1. Replace the blade set by hooking it into the housing. The small lug at the base of the blade should be aligned with the indent on the clipper casing. Press the blade down until it clicks into position (Fig. 8b).



## **CLEANING AND MAINTENANCE**

- Remove the attachment comb (Fig. 7b) after every use and lift the blade set out of the housing (Fig. 8a).
- Use the cleaning brush to remove any cut hairs from the housing opening and from the blade set (Fig. 9).
- The cleaning lever (Fig. 9a) can also be pressed. This allows the cut hairs that accumulate between the bottom blade and the top blade to be easily removed using the cleaning brush.
- Only wipe the appliance with a soft, slightly damp cloth.
- The charging contacts on the charging stand and on the battery pack should always be kept clean.
- Clean the blade set regularly using hygienic spray.
- Oil the blade set with the blade set oil (Fig. 10)
- For long-lasting cutting performance, it is important to oil the blade set frequently.
- If the cutting performance deteriorates after long use despite regular cleaning and oiling, the blade set should be replaced.

## **LITHIUM BATTERY REPLACEMENT, REMOVAL AND DISPOSAL**

### **Lithium-Ion Battery Replacement**

The battery should only be replaced by the original manufacturers spare, for safety reasons a substitute should not be used. Lithium-Ion batteries can explode, catch fire, and/or cause burns if disassembled, damaged or exposed to water or high temperatures.

### **Lithium Battery Disposal**

Do not dispose of this product or the Lithium battery in the normal household waste.

The product should be returned to Wahl Customer Services where we offer a take back service or taken to a local collection facility where they will be dealt with safely and sent for the appropriate recycling.

## WASTE ELECTRICAL & ELECTRONIC EQUIPMENT DIRECTIVE 2002/96/EC (WEEE)



Within the European Community, national regulations are specified for the disposal of electrical appliances, based on EU Waste Electrical and Electronic Equipment Directive 2002/96/EC (WEEE). In accordance with this, the appliance can no longer be disposed of with the local or domestic waste.

The appliance will be accepted free of charge by local collection points or recycling centres.

### WIRING



#### WARNING:

If the transformer is damaged it must be replaced in order to avoid a hazard.

This product must only be used with the transformer supplied.

Should a replacement be required contact Wahl Customer Service.

### DISPOSAL



Handle with care. Environmental damage in the case of incorrect disposal.

Correct disposal will ensure environmental protection and prevent any potentially harmful impacts on people and the environment.

Adhere to the relevant legal requirements when disposing of the appliance.

**Information on the disposal of electrical and electronic appliances in the European Community.**

## **TROUBLESHOOTING**

### **Blade set is cutting badly or pulling hair out.**

**Cause:** Blade set is dirty, worn or blunt.

- Clean and oil the blade set (Fig. 9/10); if this does not resolve the problem, replace the blade set (Fig. 8).

### **Skin injury**

**Cause:** Too much contact pressure on the skin.

- Reduce contact pressure when cutting close to skin.

**Cause:** Damaged blade set.

- Check whether the blade edges or teeth are damaged and replace the blade set if necessary.
- NEVER use a damaged blade as this will cause injury.

### **Battery life is too short.**

**Cause:** Blade set and housing opening are dirty.

- Clean and oil the blade set (Fig. 9/10).

**Cause:** Battery is worn out.

- Replace the battery pack with an original spare part.
- Replacement battery packs are available from your dealer or from our Customer Service team.

### **Charging indicator does not light up.**

**Cause:** The battery pack is not correctly positioned on the charging stand.

- Ensure that the battery pack has been correctly placed on the charging stand.

**Cause:** Charging contacts are dirty.

- Clean the charging contacts on the charging stand and on the battery pack.

**Cause:** Defective power supply.

- Ensure that the plug-in transformer is plugged into the mains socket.
- Check the mains cable for possible damage.

## **GUARANTEE**

This product is guaranteed against defects in material and workmanship for a period of 1 year from the date of original purchase or receipt as a gift.

Should this product become defective during the guarantee period, return it to the store of purchase together with your proof of purchase for repair or replacement.

Alternatively within the guarantee period you can return the product to Wahl (UK) Ltd who will repair any such defect or elect to replace the product or any part of it, without charge, provided that there is proof of purchase. Should a replacement be offered this will not extend the original guarantee period.

The guarantee becomes invalid in the case of misuse, alteration or repair by unauthorised persons.

This guarantee does not include blades, cables, and cutters etc, which are consumable parts.

This guarantee in no way affects your rights under statutory law in the United Kingdom.

WAHL (UK) LTD  
STERLING HOUSE  
CLIPPER CLOSE  
RAMSGATE, KENT  
CT12 5GG

CUSTOMER SERVICES T: 01227 740066  
[www.wahl.co.uk](http://www.wahl.co.uk)

Form No. ZB877  
Rev.2 01-19