



P R O F E S S I O N A L

**PROFESSIONAL SHAVER
INSTRUCTIONS**

PROFESSIONAL SHAVER

PROFESSIONAL SHAVER

Please read all instructions carefully to familiarise yourself with your new Professional Shaver before using.

Save these instructions for further reference.

For any further assistance or information call Customer Services on

T: 01227 740066

or visit

W: www.wahl.co.uk

E: customer.services@wahl.co.uk

CONTENTS

GENERAL USER INFORMATION	Page 4
IMPORTANT SAFEGUARDS	Page 5
OPERATING INSTRUCTIONS	Page 9
CARE AND CLEANING	Page 11
TROUBLESHOOTING	Page 13
WIRING	Page 14
DISPOSAL	Page 14
GUARANTEE	Page 15

PROFESSIONAL SHAVER

GENERAL USER INFORMATION

Information about using the operation manual

- ▶ Before using the appliance for the first time, you must read and understand the operation manual completely.
- ▶ Consider the operation manual as part of the product and store it in a safe and accessible place.
- ▶ Include this operation manual if passing the appliance on to a third party.
- ▶ In the case of conflicts with national safety specifications or instructions, the national requirements must be followed.

Explanation of symbols and notes



DANGER

Danger of electric shock which may result in serious physical injury or death.



DANGER

Danger of explosion which may result in serious physical injury or death.



WARNING

Warning of possible physical injury or a health risk.



CAUTION

Information about danger of material damage.



Note with useful information and tips.

- ▶ Action to be taken by owner.
1. Carry out these actions in the sequence described.
- List

Please retain this leaflet for future reference.

READ ALL INSTRUCTIONS BEFORE USING.

IMPORTANT SAFEGUARDS

When using this electrical appliance, especially when children are present, basic safety precautions should always be observed including the following.

Requirements

- ▶ Read the instruction manual in full to familiarize yourself with the product before the first use.
- ▶ This appliance can be used by children from aged 8 years and above and persons with reduced physical, sensory or mental capabilities, or lack of experience and knowledge, if they have been given supervision or instruction concerning use of the appliance in a safe way and understand the hazards involved. Children shall not play with the appliance. Cleaning and user maintenance shall not be made by children without supervision.
- ▶ Use this appliance only for its intended purpose.

Hazards



Danger! Electric shock due to damage to appliance

- ▶ Do not operate the appliance with a broken cord, plug or charger, or if the appliance malfunctions, or is dropped or damaged in anyway.
- ▶ Any servicing or repair must be performed by WAHL (UK) LTD or a suitably qualified professional. The use of attachments that are not supplied by the manufacturer may cause fire, electric shock or injury and damage to the appliance.



Danger! Electric shock due to penetration of liquid.

- ▶ To protect against risk of electrical shock, never immerse the unit or let it come into contact with water or any other liquids. Do not use the unit with wet hands. If the appliance should become wet, damp or fall in water, remove plug from mains socket immediately. Do not put your hands in the water. Do not take into bathroom.



Danger of explosion

- ▶ Never use the appliance where aerosol (spray) products are being used or where oxygen is released.

- ▶ Exhausted batteries/ rechargeable batteries should not be disposed of in the household waste. Dispose of them in a completely discharged state in accordance with local legal regulations. Do not throw into fire where heat could cause them to rupture.



Warning! Injuries due to incorrect handling

- ▶ Switch off the appliance and unplug from outlet when not in use, before putting on or taking off attachments and also before cleaning the appliance.
- ▶ Never use your appliance without paying attention! Except when charging always unplug this appliance from the electricity outlet immediately after using.
- ▶ Do not expose or store the appliance at temperatures below 0°C (32°F) or above 45°C (113°F). Avoid direct exposure to sunlight.
- ▶ Follow all charging instructions and do not charge appliances outside of the temperature range of 0-45°C (32-113°F). Charging improperly or at temperatures outside of this specified range may damage the battery and increase the risk of fire.



Caution! Danger of product damage

- ▶ Do not wrap the cord around the appliance / charger.
- ▶ Do not use outdoors or in damp areas.
- ▶ Never carry the unit by its power cord.
- ▶ Do not drop or insert any object into any opening.

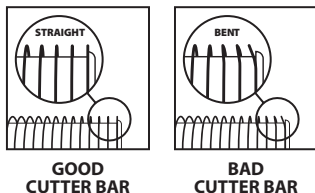
PROFESSIONAL SHAVER



OPERATING INSTRUCTIONS

QUICK TIPS & HANDY REMINDERS

- 1/32"** The foil is for super close cutting and designed to cut hair that is 1/32" or shorter.
- LIGHT TOUCH** The foil needs to glide over the skin. Do not press hard against the skin but allow the shaver to work for you. Pressing against the skin too hard can cause damage to the foil.
- CLEAN** It is important to use the shaver with a foil and cutter bars that is clean and free of hair and other debris that might affect performance.
- USE & WEAR** The foil and cutter bars will wear out and may need replacing depending on usage. The foil is micro-thin with precise, raised inner cutting edges around the holes. These raised cutting edges will wear with use which will be indicated if your shaver slows down and the foil seems to get warm.
- INSPECT** To ensure continued shaving satisfaction, you should replace the foils often and cutter bars periodically.



Replace cutter bars if damaged. Damage to the foil will result from using a broken or bent cutter bars.

Replace foil if creased, worn or broken. Using a damaged or broken foil can result in injury.

PROFESSIONAL SHAVER



Make sure to use the Foil Guard to protect the delicate dual foil heads when the shaver is not in use.



If you are a first-time electric shaver user, or changing from another brand, there will be a 2-3 week (or less) adjustment period, while your face and beard adapt to the new foil.

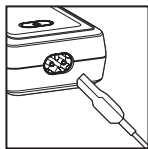
During the break-in period of the cutter bars, black residue may be left on the face. It is a harmless combination of whiskers, skin debris and minute particles from the cutter bars, which will wash off easily. This condition will quickly disappear with use.

We suggest that you thoroughly cleanse and completely dry skin prior to shaving. For those times when the beard is longer than 1/32" begin by using a trimmer to cut the beard, then use the shaver to get a close, clean shave.

Begin shaving at the neckline, in short, upwards strokes and then continuing upwards until you have shaved all areas of the beard. The shaver is designed to remove most facial hair and give a close, clean shave that is bump and irritation free.

USING RECHARGEABLE SHAVERS

If battery power is low, the power cord can attach directly to the shaver for continued use as a corded shaver.



CORDED OPERATION

Attach power cord plug into shaver first, then to outlet. If your battery is completely run down, allow the shaver to charge for 1 minute (switched OFF) before using as a corded shaver.

If the cord is left attached to the shaver when not in use, the cord will automatically charge the shaver when left OFF.

PROFESSIONAL SHAVER

CHARGING OPERATION

When the shaver is attached to the power supply, the LED's will flash in a sweeping pattern. As the battery charges the LEDs will turn solid to indicate the amount of charge.

- **1 solid LED and 2 flashing means the battery is at least 30% charged.**
- **2 solid LEDs means the battery is at least 60% charged.**

Once the battery is fully charged all 3 LEDs will remain on solid until the power supply (charger) is disconnected.

DISCHARGING

The shaver must go through one full charge before proper fuel gauge/LED function can take place. If the shaver has not gone through a full charge, all 3 LEDs will flash during discharge. During normal discharge, the number of LEDs remaining on corresponds to the percent of battery charge remaining. Once the battery is near empty, the LEDs will flash to indicate the shaver should be recharged.

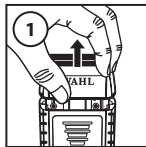
TRAVEL LOCK OPTION

The shaver can be locked by holding down the power button for 3 seconds. The motor will turn off and the LEDs will flash 3 times. If the power button is pressed while the shaver is locked, the LEDs will flash 3 times and the motor will not turn on. The shaver can be unlocked by holding the power button down for 3 seconds again or by connecting the power supply (charger).

CARE AND CLEANING

CORD CARE

The cord should never be used to pull the shaver. Freedom of movement needs to be maintained. Care should be used to keep the cord untwisted, and undamaged. When stored, the cord should be coiled and placed neatly in a dry place.

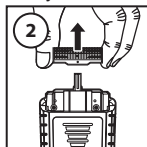


CLEANING THE FOIL/CUTTER BARS

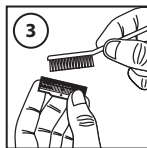
1. Remove the foil head from the top of the shaver by pressing the release button located on the right side of the shaver. Next, lift the foil head off of the shaver. The foil head may be cleaned

PROFESSIONAL SHAVER

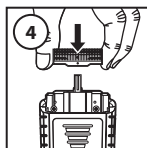
of loose material, by gently tapping the housing against the surface of your sink. The foil is micro-thin with precise, raised inner cutting edges, always handle with care.



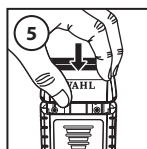
2. To remove the individual cutter bars, grasp both sides of the cutter bar and pull up.



3. Gently brush any loose hair and debris from the cutter bar with the pre-shave brush. Run the cutter bar under warm water and dry it off with a paper towel.

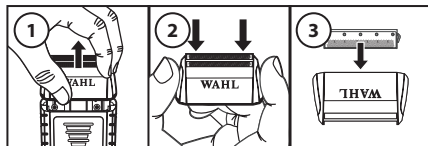


4. Return the individual cutter bars to the shaver. Grasp both sides of the cutter bars, line up the metal pin on the bottom of the cutter bar to the slot of the drive finger and snap on.



5. Replace the foil head to the top of the shaver before use.

REMOVING INDIVIDUAL FOIL CARTRIDGES



1. Remove foil head from the shaver by pressing the release button located on the right side of the shaver.

2. To remove the foil cartridges, hold the foil head and gently

PROFESSIONAL SHAVER

push down on each side of the foil cartridge. The foil cartridge will pop out to be cleaned or replaced.

3. Return the foil cartridge by lining the foil cartridge up from the bottom of the foil head and gently snapping into place.

EASY TIP: To snap foil cartridge in place, snap one side of the cartridge in and then the other. You will hear a snap when cartridge is secure.

4. Replace the foil head to the top of the shaver before use.

DO NOT DIP OR SOAK the shaver or foils in any type of cleaning solution, disinfectant or oil. To disinfect foils, spray disinfectant directly onto foils and wipe off excess liquid to prevent damage to the foil housing. Excess liquid can deteriorate the shaver's plastic components and seep into the motor compartment affecting motor life and performance.

UNIT CARE

Use a clean cloth (dry or dampened with water).

DO NOT USE bleach, benzene or thinner to clean the shaver.

CORD CARE

The cord should never be used to pull the shaver. Freedom of movement needs to be maintained. Care should be used to keep the cord untwisted, and undamaged. When stored, the cord should be coiled and placed neatly in a dry place.

TROUBLESHOOTING

If your shaver does not seem to be operating or charging properly, please check the following:

- Check the outlet's current by plugging another appliance (one you know is in proper working condition) into the outlet.
- Make sure the unit is not connected to a power source

PROFESSIONAL SHAVER

- that turns itself off when lights are turned off.
- Make sure the shaver and charging transformer contacts are clean and free of hair or other contaminants.

LITHIUM-ION BATTERY REPLACEMENT

This product uses a lithium-ion battery. For proper disposal of this appliance, please refer to disposal section below. For battery replacement send the entire, intact clipper unit to Wahl (UK) Limited. Do not attempt to remove the battery. Lithium-Ion batteries can explode, catch fire, and/or cause burns if disassembled, damaged, or exposed to water or high temperatures.

If you choose not to replace the battery, the entire, intact clipper must be disposed. Do not attempt to remove the battery for disposal. Lithium-Ion batteries may be subject to local disposal regulations.

WIRING



WARNING: if the transformer is damaged it must be replaced in order to avoid a hazard.

This product must only be used with the transformer supplied. Should a replacement be required please contact Wahl Customer Services.

DISPOSAL



Handle with care! Environmental damage in the case of incorrect disposal.

LITHIUM BATTERY DISPOSAL

Do not dispose of this product or the Lithium battery in the normal household waste. The product should be returned to Wahl Customer Services where we offer a take back service or taken to a local collection facility where they will be dealt with safely and sent for the appropriate recycling. Do not attempt to remove the battery. Lithium-Ion batteries can explode, catch fire, and/or cause burns if disassembled, damaged, or exposed to water or high temperatures.

PROFESSIONAL SHAVER

Correct disposal will ensure environmental protection and prevent any potentially harmful impacts on people and the environment.

Adhere to the relevant legal requirements when disposing of the appliance.

Information on the disposal of electrical and electronic appliances in the European Community:



Within the European Community, national regulations are specified for the disposal of electrical appliances, based on EU Waste Electrical and Electronic Equipment Directive 2012/19/EU (WEEE). In accordance with this, the appliance can no longer be disposed of with the local or domestic waste. The appliance will be accepted free of charge by local collection points or recycling centres.

GUARANTEE

This product is guaranteed against defects in material and workmanship for a period of one year from the date of original purchase or receipt as a gift.

Should this product become defective during the guarantee period, return it to the store of purchase together with your proof of purchase for repair or replacement.

Alternatively within the guarantee period you can return the product to Wahl (UK) Ltd who will repair any such defect or elect to replace the product or any part of it, without charge, provided that there is proof of purchase. Should a replacement be offered this will not extend the original guarantee period.

The guarantee becomes invalid in the case of misuse, alteration or repair by unauthorised persons.

This guarantee does not include blades, cables, shaver heads, foils and cutters etc which are consumable parts.

This product is design for domestic use only and use within a professional environment will invalidate the guarantee.

This guarantee in no way affects your rights under statutory law in the United Kingdom.

WAHL (UK) LTD
STERLING HOUSE
CLIPPER CLOSE
RAMSGATE, KENT
CT12 5GG

CUSTOMER SERVICES T: 01227 740066
www.wahl.co.uk

Form No. ZC186
Rev.0 01-23